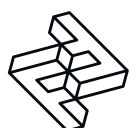


FACTORY FURNITURE



Beam Bench

OPERATION & MAINTENANCE MANUAL



Introduction

Design

Design, shop drawings and development by Factory Furniture Ltd.

Manufacture

Factory Furniture manufactured components. Products are assembled in Factory workshops, checked and dispatched ready for installation. Replacement products or components thereof should be ordered direct from Factory Furniture Ltd.

Copyright

The design copyright for the product and drawing copyright remains the sole property of Factory Furniture Ltd

Dimensions

Bench (Single)

Metric L 3000mm | width 300mm | height 450mm
Imperial L 9' 10" | width 12" | height 1' 5½"

Approx Weight 321kg

Fixing Centres 2400mm (7' 10½") x 150mm (6")

Benches (Stacked)

All details depend on final design

Materials & Finishes

Beam

- Manufactured from FSC® certified tropical hardwood
- Profiled, sanded and left untreated as standard (oil or microporous woodstain treatment available)
- Bases bolted to beam (4 no. fixing points per base).
- Multiple beam bench assembly depends on design but beams bolted together using M20 fixings.



Base

- Manufactured from hot dipped galvanised mild steel with polyester powder coat finish (*powder coat colour grey as standard or to customer specification*)
- Features all welded construction.
- Each single bench has 2 no. bases. No. of bases on multiple beam benches varies depending on design
- Bench is fixed to ground via bases using 2 no. M10 x 130mm resin fix stud anchors per base.

General Maintenance

(Recommended Schedule & Guidelines)

Daily/Weekly/Monthly (or as adopted)

Visual checks of bench - check for superficial or physical damage.

Three Monthly

Clean bench as detailed below

Six Monthly

Full clean as detailed below; check that bench is firmly secured to the ground

Specific Maintenance

FSC Timber

Clean with a stiff brush once per year, especially in more exposed locations, in order to prevent a verdigris type build up on the timber surface. Ideally this should be completed in early spring. During the cleaning stage, all exposed timber surfaces should be inspected for splits and splinters. Any splinters and graffiti should be removed and the surface sanded with 100 grit sandpaper in order to remove any uneven / sharp edges or surfaces.

During the first few months after installation the tannin naturally occurring in the timber may leach out and cause a brown staining on the bases. This may be removed with a light solution of household bleach and water.

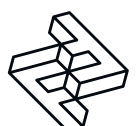
Polyester Powder Coated & Galvanised

For general cleaning using a damp cloth and warm soapy water only. Scourers and abrasive cleaners are NOT suitable for this type of finish and may damage it. Before using any cleaning agents to remove graffiti etc. try on a small, inconspicuous area first to avoid causing more unsightly damage.

**Please note that when a powdercoat is applied over a hot dip galvanised surface pinholing can occur in the surface finish - this is not considered a defect.*

Handling

Please observe health and safety lifting guidelines. A fork lift or crane will be required for off loading and positioning of items



Repairs

FSC Timber

For light damage, please see section on specific maintenance details above. For instances of heavy damage, the timber item should be replaced. Please order against the part number reference in the reordering section towards the end of this manual.

Polyester Powder Coated & Galvanised Surfaces

For light damage (scratches, chips etc.) repair using touch-up paint to match original colour (available from Factory Furniture Ltd). Paint application should be carried out in accordance with approved methods detailed by the paint manufacturer. Please note that it is advisable to use professional painters to achieve best results when touching up larger areas. Products for respraying larger areas are available from Factory Furniture Ltd.

Heavy Damage

In the event of serious damage to any component, replacements should be ordered from Factory Furniture Ltd.

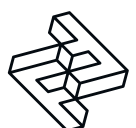
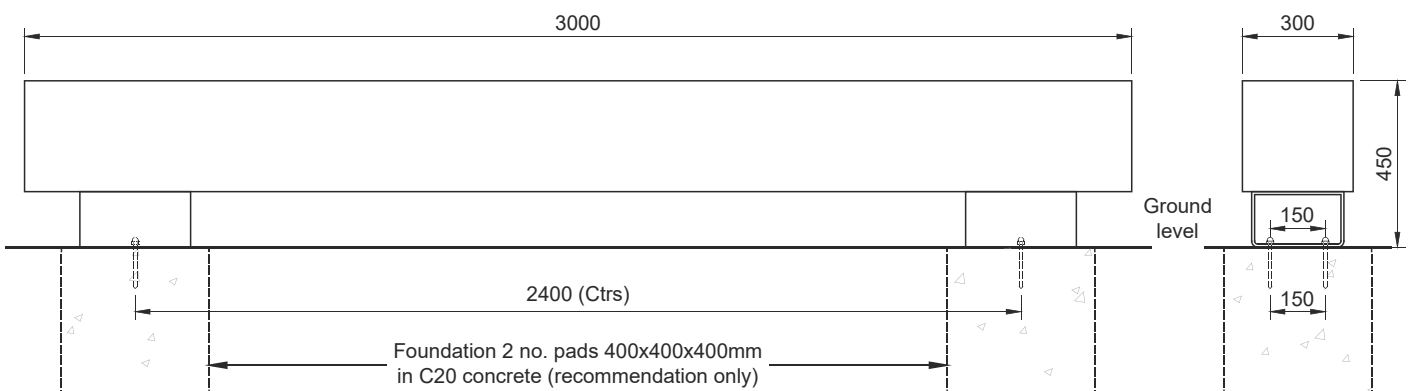
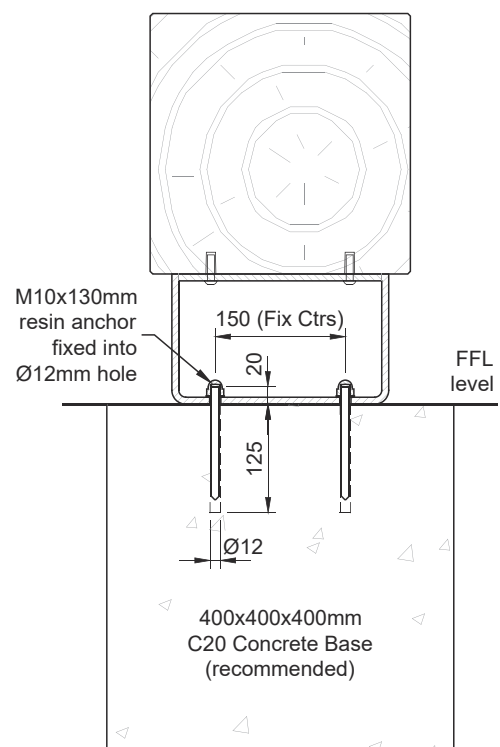
In this event (or if the product needs to be disassembled for any reason), please contact Factory Furniture Ltd. for detailed technical advice.

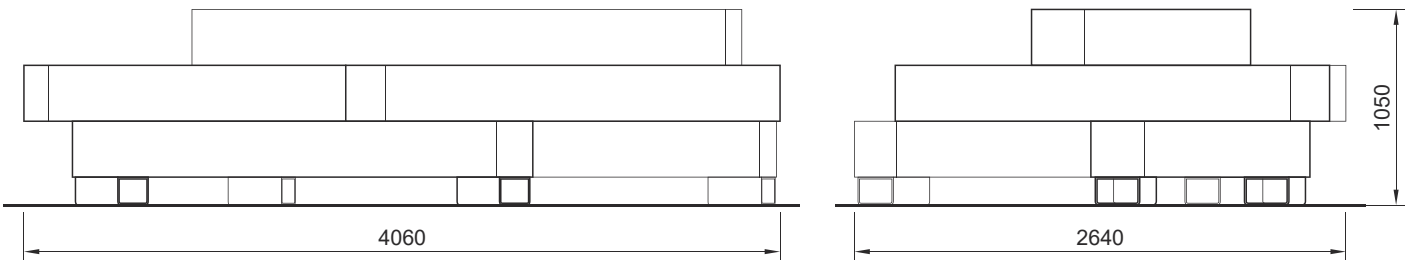
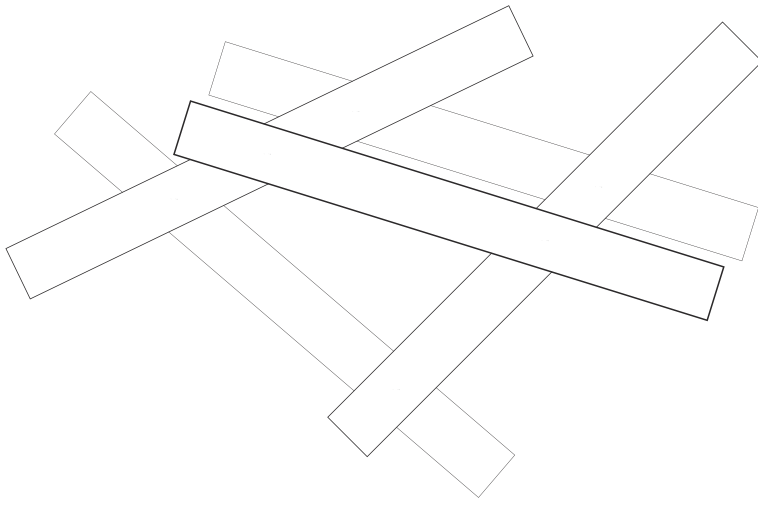
Installation Instructions

All installation works to be carried out by competent personnel - install as complete unit.

1. Install suitable foundation pads (see illustrations) each with top face at ground level.
2. Position bench in correct orientation with bases centrally on foundation pad (*if necessary use shims to get bench level*); then mark hole positions through bases.
3. Remove bench and drill holes $\text{Ø}12\text{mm} \times 125\text{mm}$ deep (*or as manufacturer's recommendations*).

4. Clear debris from holes.
5. Screw capnuts onto resin anchor studs (leaving some room for final tightening).
6. Fill the holes to within approximately 35mm from the top with Hilti HY150 resin (or similar).
7. Move bench back into position and drop resin anchor studs with capnuts into the holes - leave for two hours before proceeding.
8. Using a torque wrench, tighten nuts and washers over base plates to 20Nm to fasten down the bench.
9. Check levels.

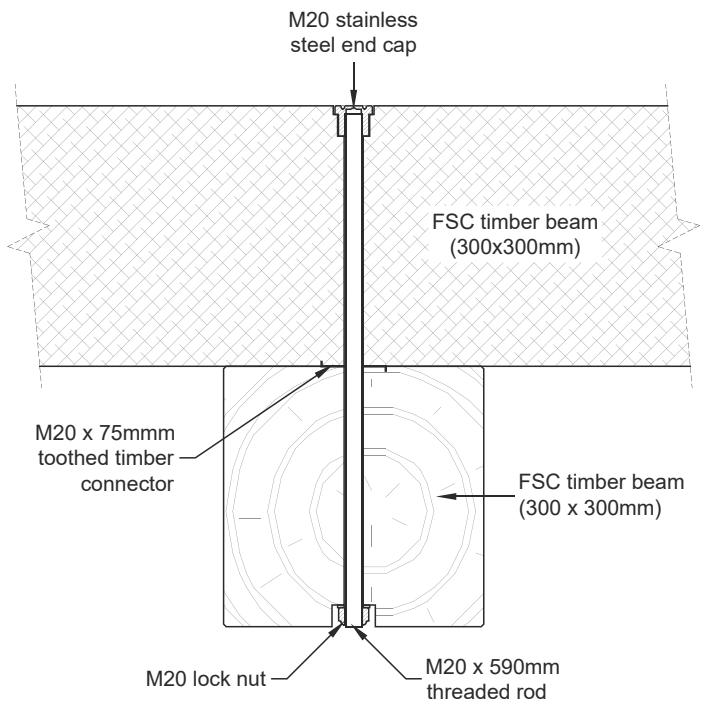




Example of possible layout for stacked benches

(For multiple beam bench assembly)

10. Arrange beams in correct position (ensuring beam to beam M20 connection holes are aligned).
11. Bolt together beam assembly using M20 threaded rods and fixings provided.
12. Anchor lowest beams in position following steps 1-9 on previous page.



5 Pioneer Road, Faringdon,
Oxfordshire SN7 7BU
+44 (0)1367 242731
hello@factoryfurniture.co.uk

