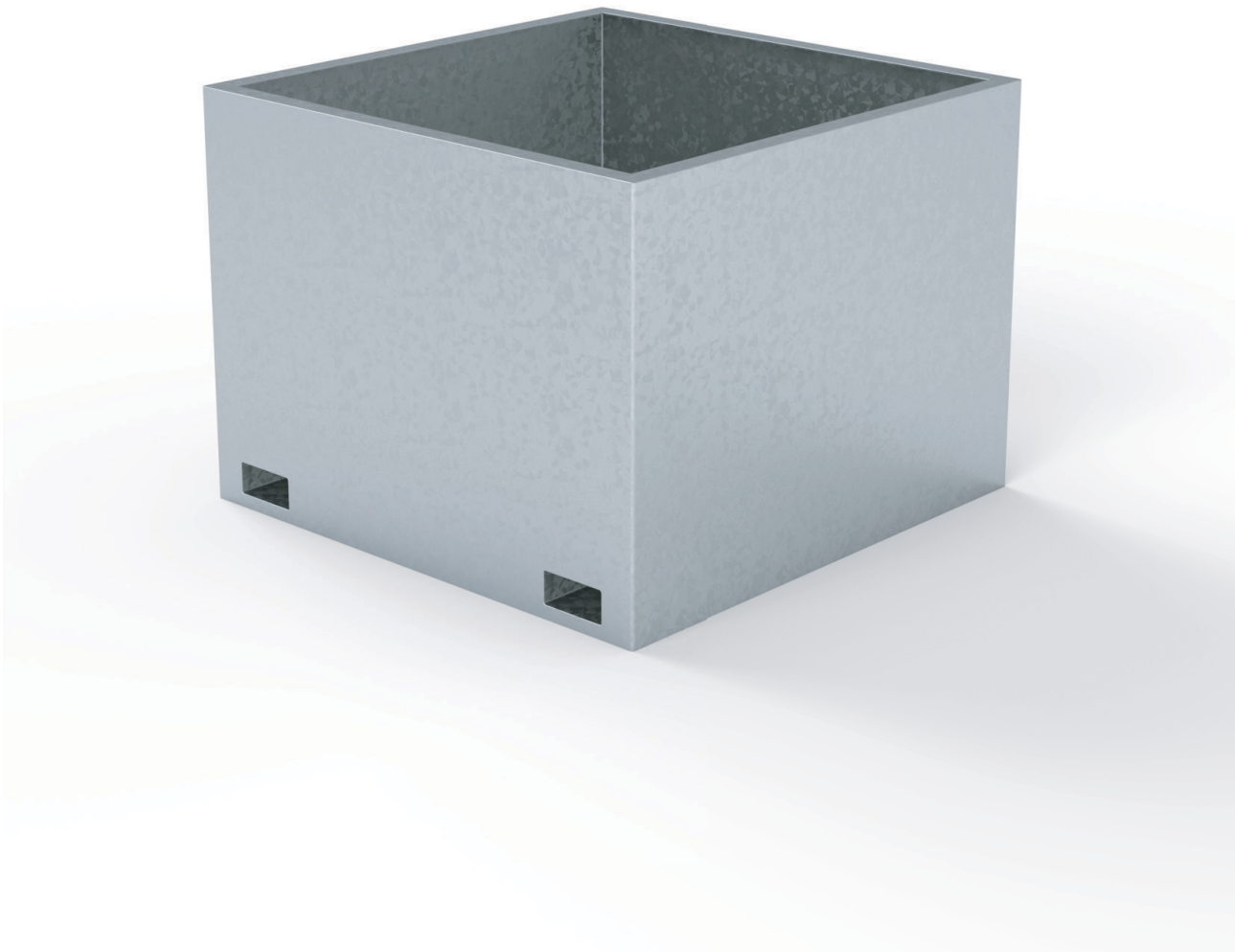
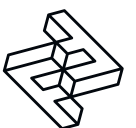


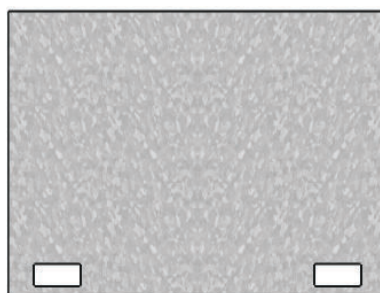
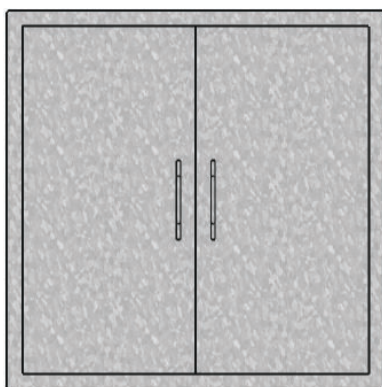
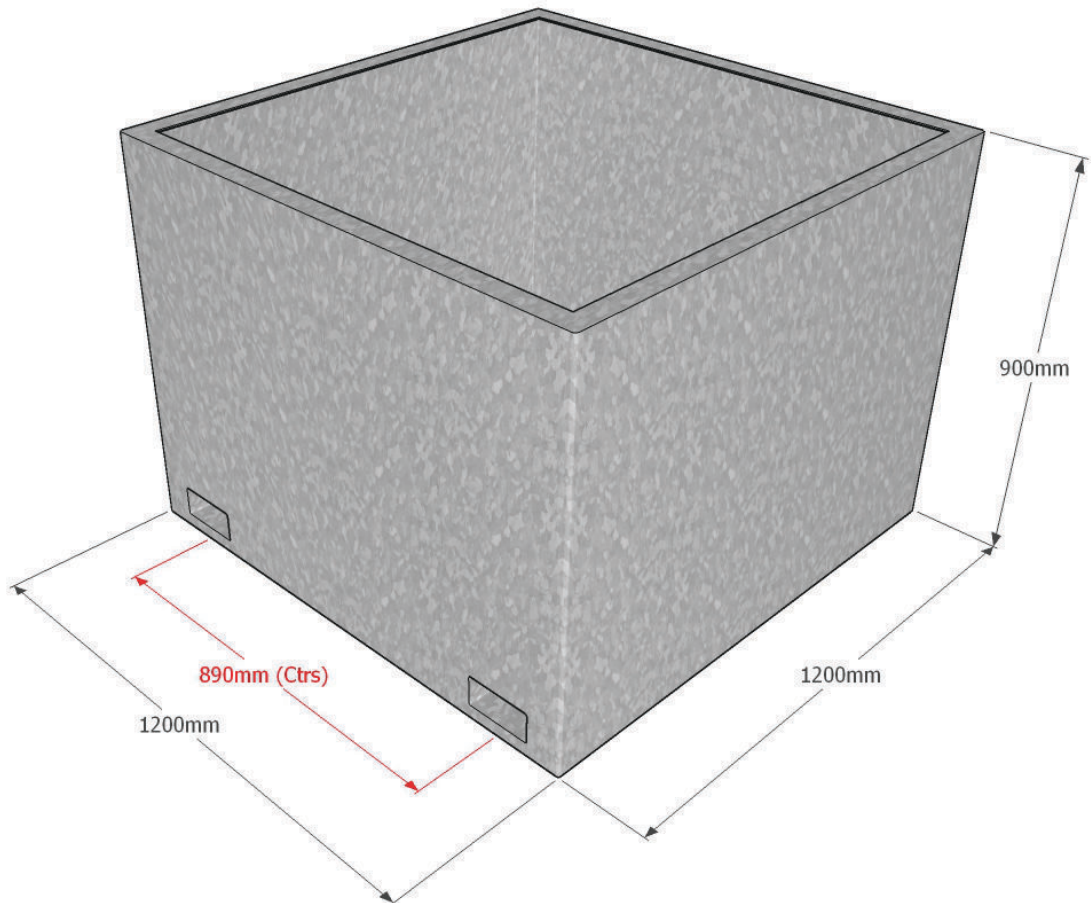
# FACTORY FURNITURE



## Galvanised Square Tree Planter

TECHNICAL SHEET





## Composition

Planter - Mild steel

## Finish

Mild steel - Galvanised as standard (polyester powder-coated option available\*)

## Dimensions

Metric L 1200mm | width 1200mm | height 900mm  
Imperial L 3' 11" | width 3' 11" | height 2' 11½"

## Planter capacity

1050ltrs

## Approx weight

237kg

## Forklift centres

890mm

## Handling

Please observe health & safety lifting guidelines. A forklift or crane will be required for off-loading and positioning of product.

## Maintenance

Depends on usage and position. All elements will require annual cleaning. Galvanised steel will require maintenance only if damaged.

*\*Please note that when a powdercoat is applied over a hot dip galvanised surface pinholing can occur in the surface finish - this is not considered a defect.*

