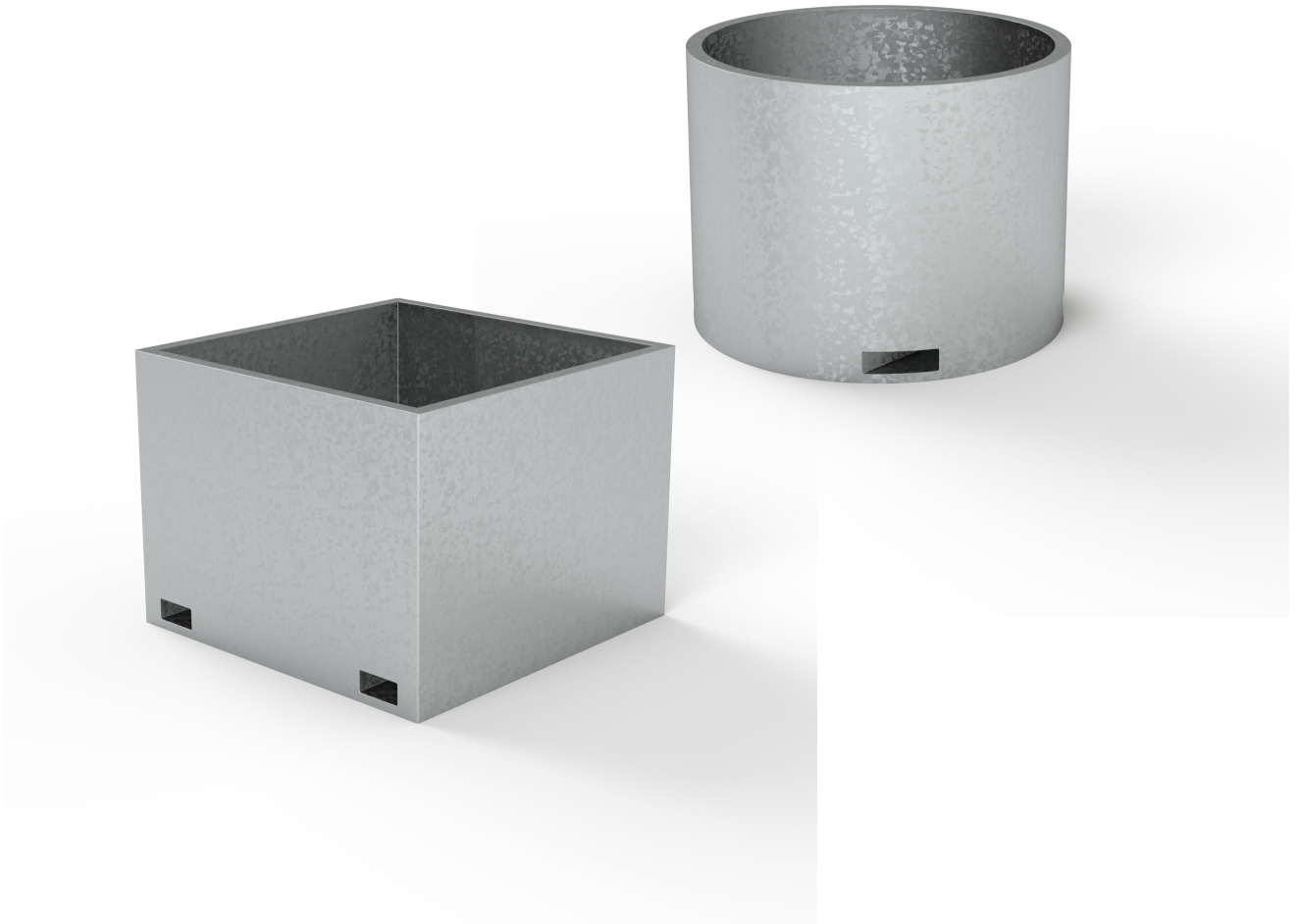
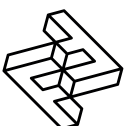


# FACTORY FURNITURE



## Galvanised Tree Planters

OPERATION & MAINTENANCE MANUAL



# Introduction

## Design

Design, shop drawings and development by Factory Furniture Ltd.

## Manufacture

Factory Furniture manufactured components. Products are assembled in Factory workshops, checked and dispatched ready for installation. Replacement products or components thereof should be ordered direct from Factory Furniture Ltd.

## Copyright

The design copyright for the product and drawing copyright remains the sole property of Factory Furniture Ltd.

# General Specifications

## Round Planter

*Metric* diameter 1200mm | height 900mm

*Imperial* diameter 3' 11" | height 2' 11½"

**Forklift Centres** 890mm (2' 11")

**Approx Weight** 188kg

**Approx Capacity** 825ltrs

## Square Planter

*Metric* length 1200mm | width 1200mm | height 900mm

*Imperial* length 3' 11" | width 3' 11" | height 2' 11½"

**Forklift Centres** 890mm (2' 11")

**Approx Weight** 237kg

**Approx Capacity** 1050ltrs

# Detailed Material & Finish Specifications

## Planter

- Manufactured from mild steel (4mm sheet, with RHS forklift channels) featuring an all welded construction.
- Removable half-split base panels with handles for easy assembly on site.
- Entire planter is hot dipped galvanised for durable anti-weathering protection.

5 Pioneer Road, Faringdon,

Oxfordshire SN7 7BU

+44 (0)1367 242731

hello@factoryfurniture.co.uk

**factoryfurniture.co.uk**

# General Maintenance

(Recommended Schedule & Guidelines)

## Daily/Weekly/Monthly (or as adopted)

Visual checks of planter - check all items for superficial or physical damage.

## Three Monthly

Clean all items as detailed below check all fixings are seated correctly

# Specific Maintenance Details

## Galvanised

For general cleaning using a damp cloth and warm soapy water only. Scourers and abrasive cleaners are NOT suitable for this type of finish and may damage it. Before using any cleaning agents to remove graffiti etc. try on a small, inconspicuous area first to avoid causing more unsightly damage.

# Repairs

## Galvanised Surfaces

For light damage to hot dipped galvanised finishes repair using a high performance cold galvanising zinc spray (70% zinc or above). Spray application should be carried out in accordance with approved methods detailed by the product manufacturer. Please note that it is advisable to use professional painters to achieve best results when touching up larger areas.

## Heavy Damage

In the event of serious damage to any component, replacements should be ordered from Factory Furniture Ltd. In this event (or if the product needs to be disassembled for any reason), please contact Factory Furniture for detailed technical advice.

