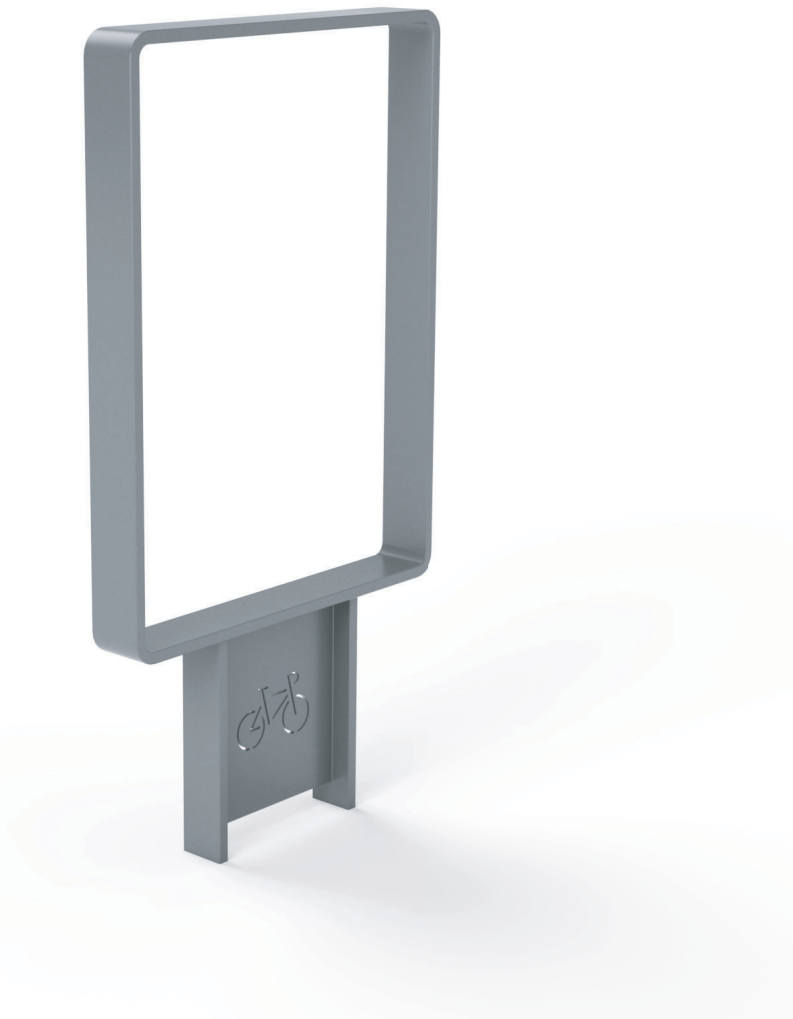
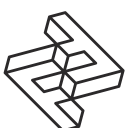


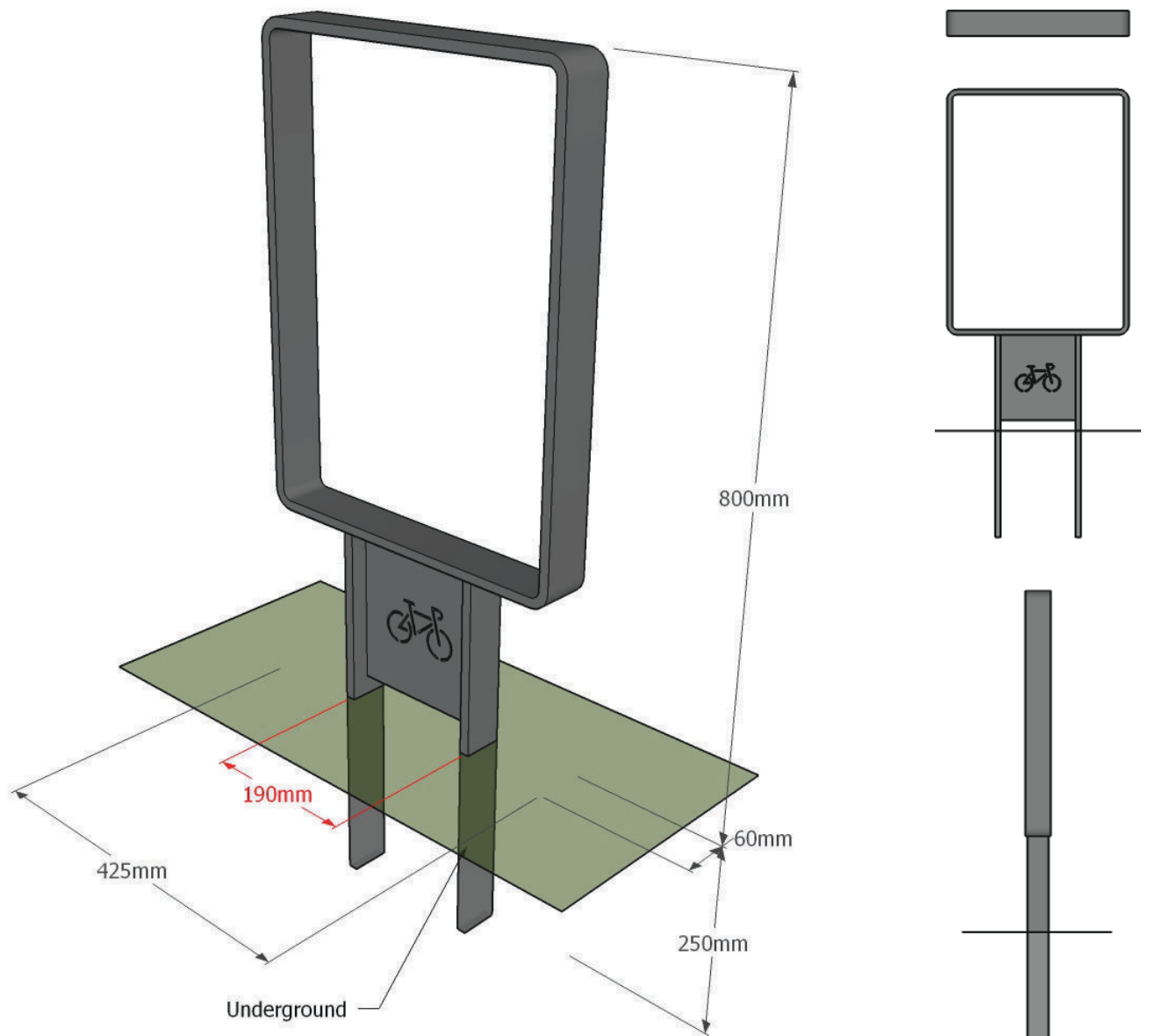
# FACTORY FURNITURE



Murton Cycle Stand

TECHNICAL SHEET





## Composition

Frame - Mild steel

## Finish

Mild steel - Galvanised and polyester powder-coated  
(grey as standard or to client specification)

## Dimensions

Metric L 425mm | width 60mm | height 800mm \*

Imperial L 1' 4½" | width 2½" | height 2' 7½" \*

\*Not incl. +250mm for below ground level fix

## Approx weight

17kg

## Fixing centres & method

Root fixed - 190mm (7½") x 250mm (10") below ground level

## Foundation

1 no. pads 400 x 400 x 400 mm in C20 concrete  
(recommendation only)

## Handling

Please observe health & safety lifting guidelines

## Maintenance

Depends on usage and position. All elements will require annual cleaning. Galvanised and powder coated mild steel only requires maintenance if damaged.

\*Please note that when a powder-coat is applied to a hot dip galvanised surface pinholing can occur in the surface finish - this is not considered a defect.

