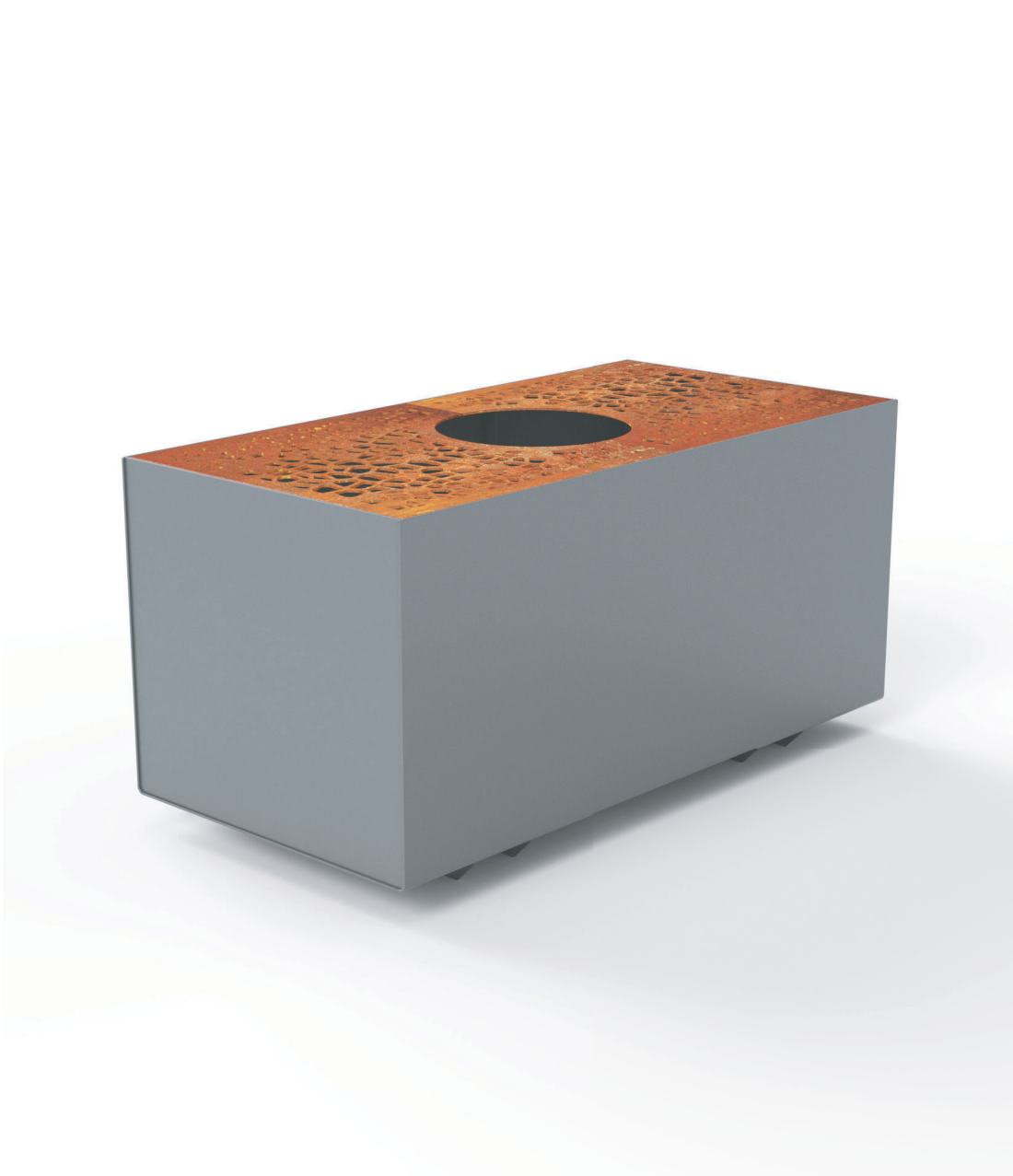
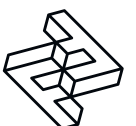


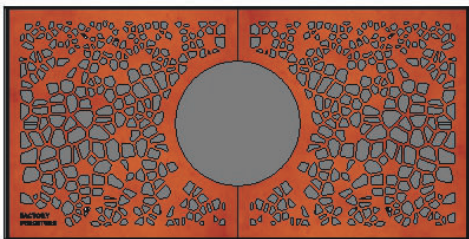
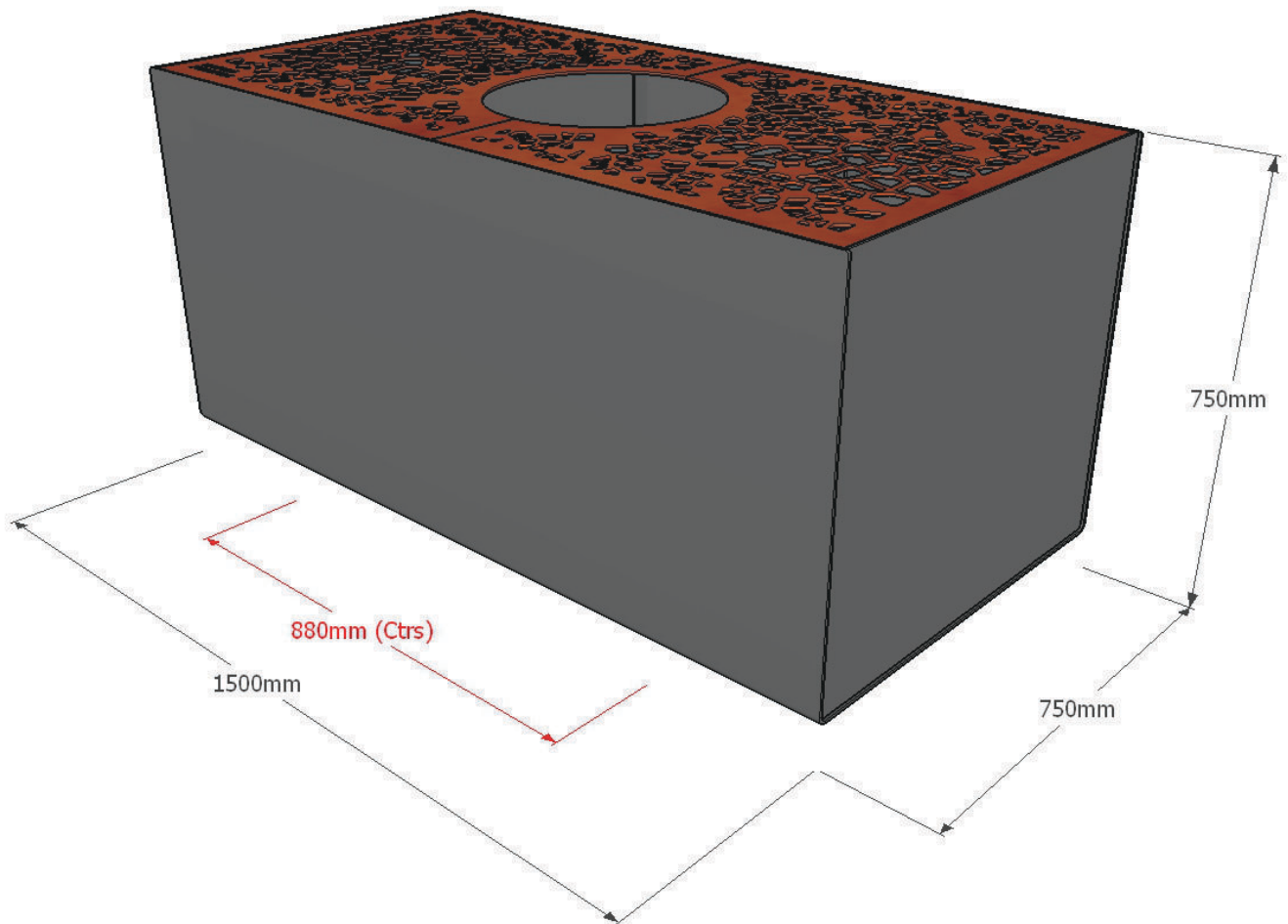
FACTORY FURNITURE



Osso Planter (1.5x0.75x0.75m)

TECHNICAL SHEET





Composition

Planter sides - Aluminium
Top panel - Corten Steel

Finishes

Aluminium - Polyester powder coated (grey as standard or as per client specification).
Corten - Steel is left untreated.

Dimensions

Metric L - 1500mm | W - 750mm | H - 750mm
Imperial L - 4' 11" | W - 2' 5½" | H - 2' 5½"

Approx weight

91kg

Forklift channel centres

880mm (2' 10½")

Handling

Please observe health & safety lifting guidelines. A forklift or crane will be required for off-loading and positioning of product.

Maintenance

Depends on usage and position. All elements will require annual cleaning. Powder coated surfaces only require maintenance if damaged. Corten requires no further maintenance.

