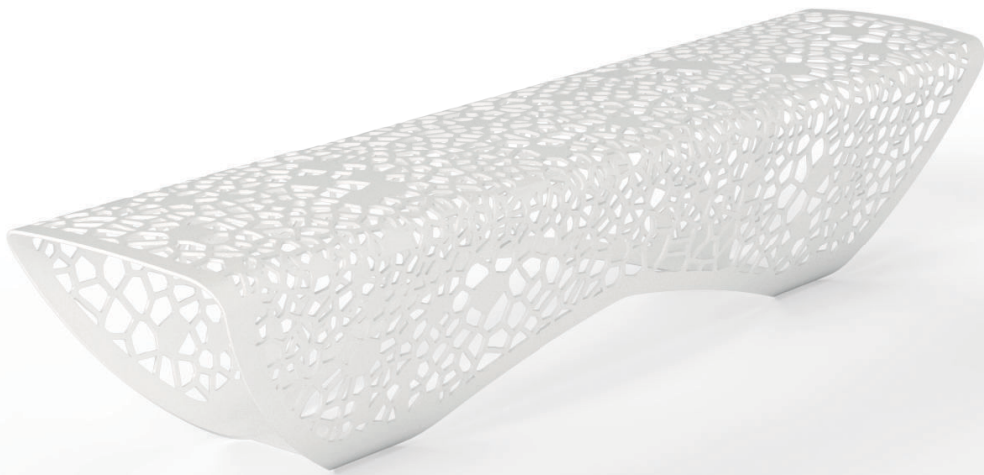
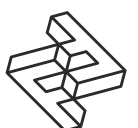


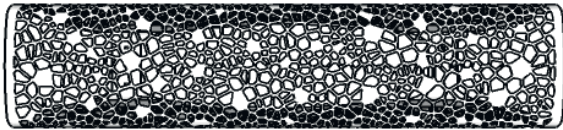
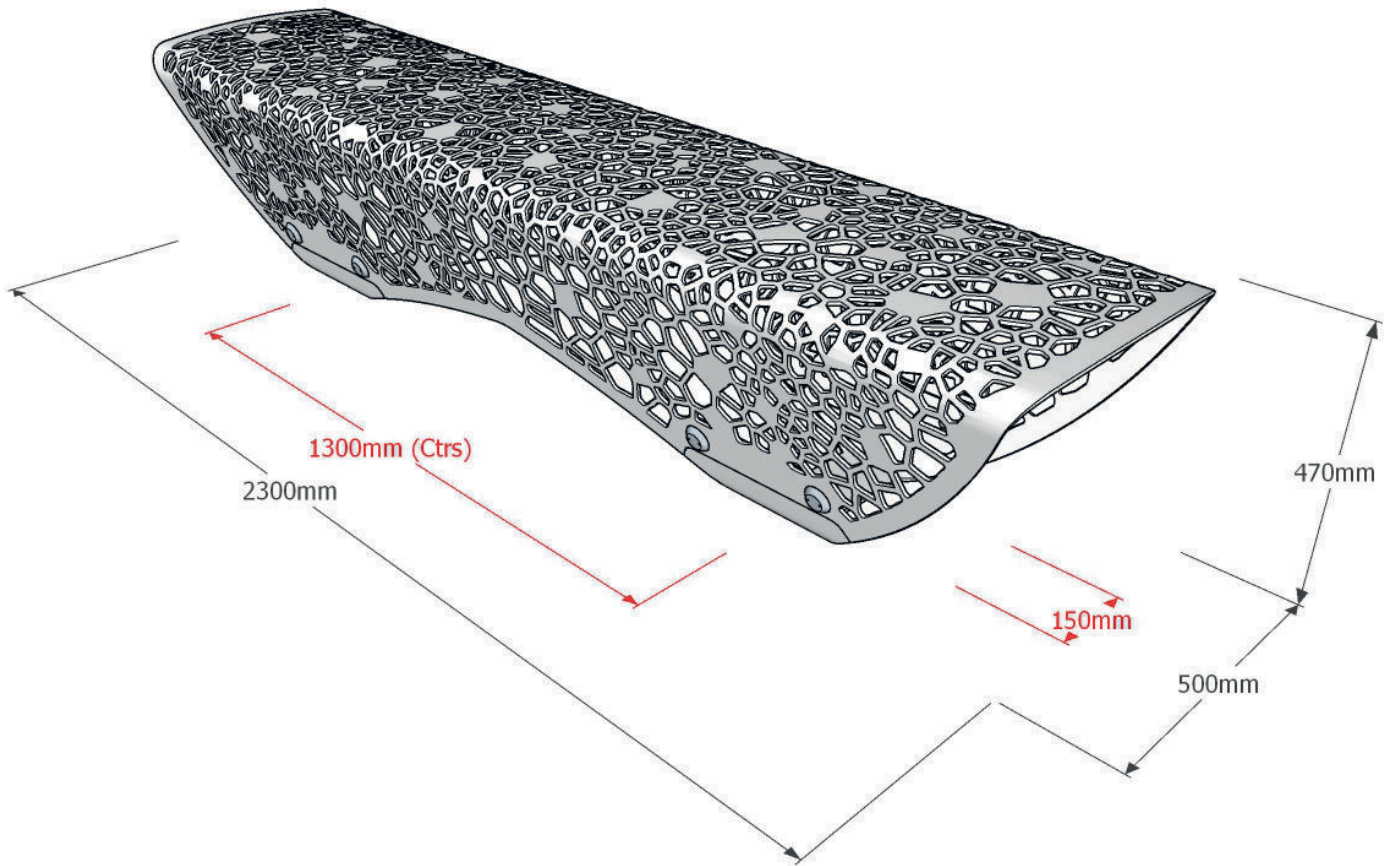
FACTORY FURNITURE



Osso² Bench

TECHNICAL SHEET





Composition

Body - Mild steel

Finishes

Mild steel - Galvanised and polyester powder-coated
(Any RAL colour as per client's specification)

Dimensions

Metric L - 2300mm | W - 500mm | H - 470mm

Imperial L - 7' 6½" | W - 1' 7½" | H - 1' 6½"

Approx weight

74kg

Fixing centers

1300mm (4' 3") x 150mm (6") - between each base

Fixing method

4 no. sleeve anchors per bench

Foundation

2 no. pads 400 x 400 x 400 mm in C20 concrete
(recommendation only)

Handling

Please observe health & safety lifting guidelines. A forklift or crane will be required for off-loading and positioning of this product

Maintenance

Depends on usage and position. All elements will require annual cleaning. Galvanised and powder coated mild steel only require maintenance if damaged.

**Please note that when a powder-coat is applied to a hot dip galvanised surface pinholing can occur in the surface finish - this is not considered a defect.*

