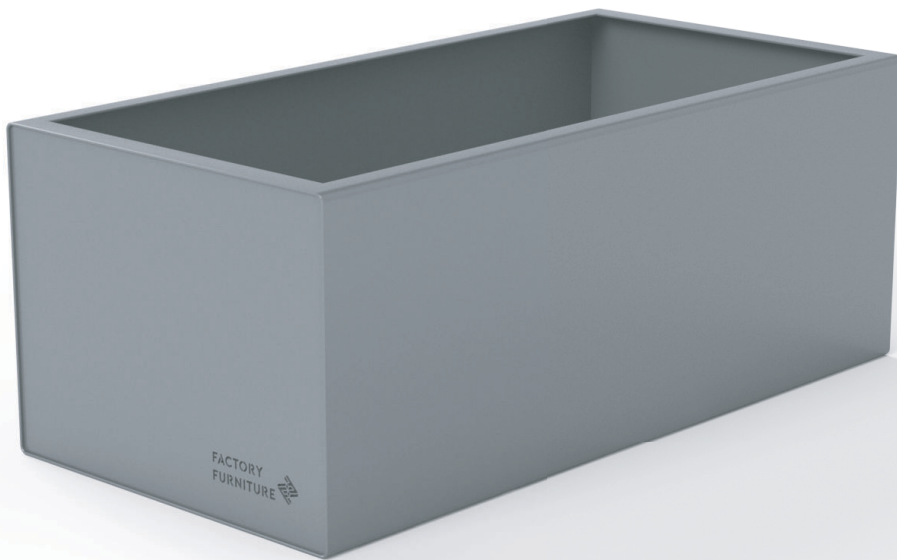
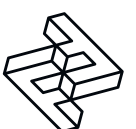


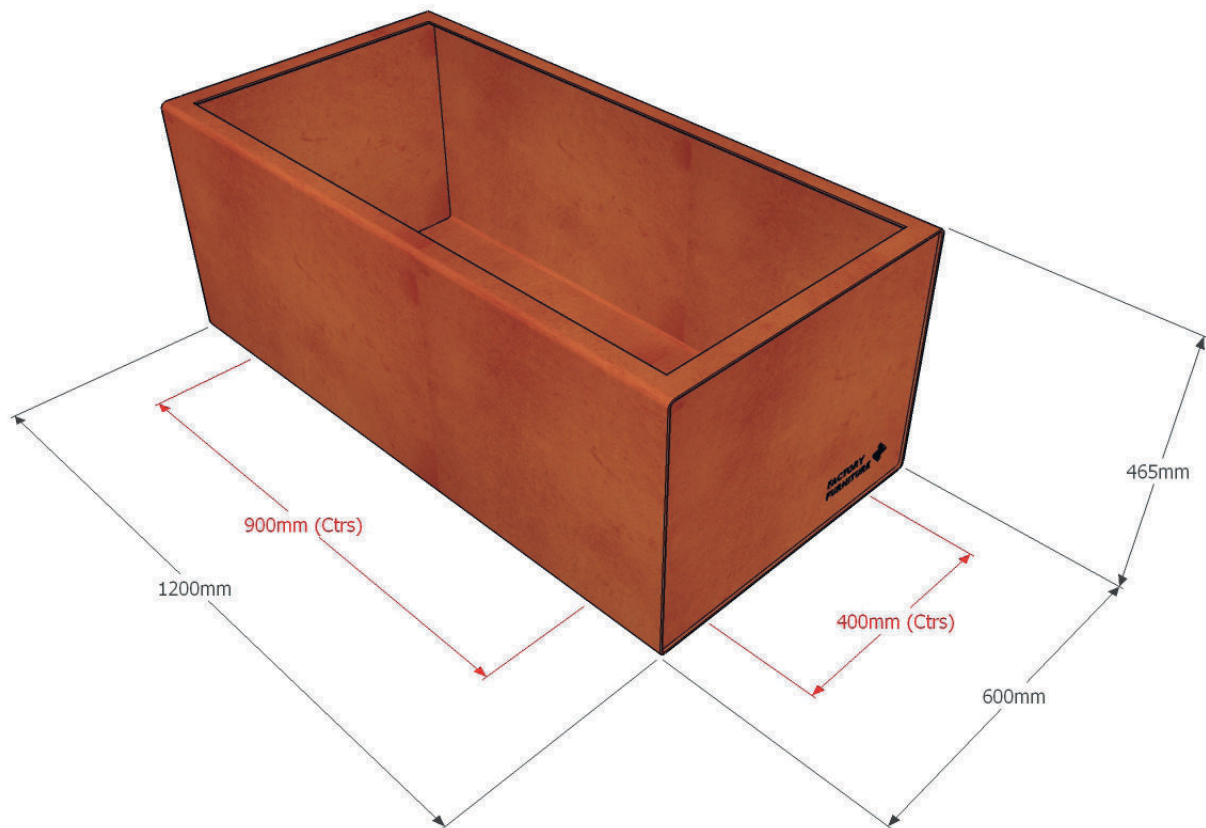
FACTORY FURNITURE



Rakt Steel Planter (0.6m)

TECHNICAL SHEET





Composition

Corten (*mild steel option available*)

Finishes

Corten - Steel is left untreated

Mild steel option - Galvanised and polyester powder-coated (*grey as standard or as per client's specification*)

Dimensions

Metric L - 1200mm | W - 600mm | H - 465mm

Imperial L - 3' 11" | W - 1' 11½" | H - 1' 6½"

Approx weight

78kg

Fixing centres & method

900mm (2' 11½") x 400mm (1' 3½") - fixed with 4 no. sleeve anchors per planter

Planter capacity

290ltrs

Foundation

2 no. pads 300 x 300 x 700 mm in C20 concrete (*recommendation only*)

Handling

Please observe health & safety lifting guidelines. A forklift or crane will be required for off-loading and positioning of product.

Maintenance

Depends on usage and position. All elements will require annual cleaning. Corten steel requires no maintenance. Galvanised and powder coated mild steel parts only require maintenance if damaged.

