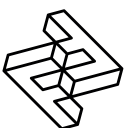


FACTORY FURNITURE



Rakt Steel Planter

OPERATION & MAINTENANCE MANUAL



Introduction

Design

Design, shop drawings and development by Factory Furniture Ltd.

Manufacture

Factory Furniture manufactured components. Products are assembled in Factory workshops, checked and dispatched ready for installation. Replacement products or components thereof should be ordered direct from Factory Furniture Ltd.

Copyright

The design copyright for the product and drawing copyright remains the sole property of Factory Furniture Ltd.

General Specifications

1.2x0.6m Planter

Metric L 1200mm | W 600mm | H 465mm

Imperial L 3' 11" | W 1' 11½" | H 1' 6½"

Fixing Centres 900mm (2' 11½") x 400mm (1' 3½")

Approx Weight 78kg

Planter Capacity 290ltrs

1.2x0.9m Planter

Metric L 1200mm | W 900mm | H 465mm

Imperial L 3' 11" | W 2' 11½" | H 1' 6½"

Fixing Centres 900mm (2' 11½") x 700mm (2' 3½")

Approx Weight 99kg

Planter Capacity 435ltrs

Detailed Material & Finish Specifications

Planter Assembly

- Manufactured from Corten steel featuring an all welded construction. (Option for galvanised mild steel)
- Mild steel option - assembly is hot dipped galvanised with polyester powder coated finish (grey as standard or as per customer specification)
- Planter is anchored to ground using 4 no. zinc-coated M10 x 75mm sleeve anchors per base.

General Maintenance

(Recommended Schedule & Guidelines)

Daily/Weekly/Monthly (or as adopted)

Visual checks of planter - check all items for superficial or physical damage.

Three Monthly

Clean all items as detailed below check all fixings are seated correctly

Six Monthly

Full clean as detailed below; check that planter is firmly secured to the ground.

Specific Maintenance Details

Corten Steel

Clean as required (but at least every three months) with warm soapy water.

Polyester Powder Coated & Galvanised Surfaces

For general cleaning using a damp cloth and warm soapy water only. Scourers and abrasive cleaners are NOT suitable for this type of finish and may damage it. Before using any cleaning agents to remove graffiti etc. try on a small, inconspicuous area first to avoid causing more unsightly damage.

Repairs

Galvanised Surfaces

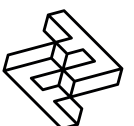
For light damage to hot dipped galvanised finishes repair using a high performance cold galvanising zinc spray (70% zinc or above). Spray application should be carried out in accordance with approved methods detailed by the product manufacturer. Please note that it is advisable to use professional painters to achieve best results when touching up larger areas.

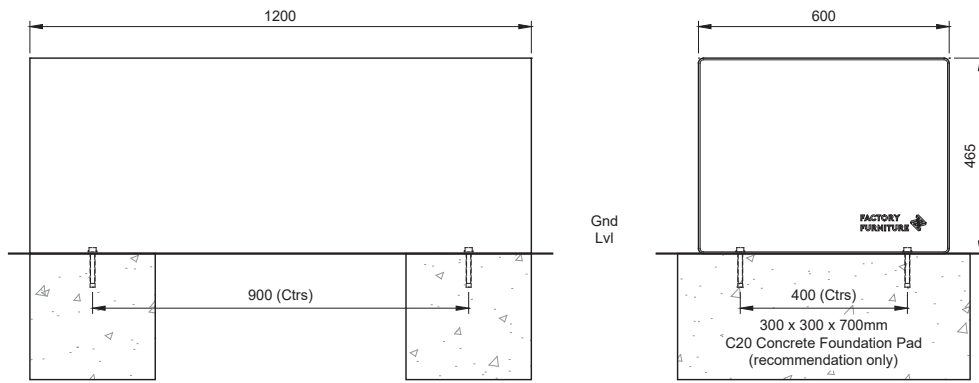
Polyester Powder Coated Surfaces

For light damage (scratches, chips etc.) repair using touch-up paint to match original colour (available from Factory Furniture Ltd). Paint application should be carried out in accordance with approved methods detailed by the paint manufacturer. Please note that it is advisable to use professional painters to achieve best results when touching up larger areas. Products for respraying larger areas are available from Factory Furniture Ltd.

Heavy Damage

In the event of serious damage to any component, replacements should be ordered from Factory Furniture Ltd. Should further assistance be required (or if the product needs to be disassembled for any reason), please contact Factory Furniture for detailed technical advice.





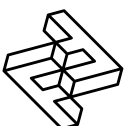
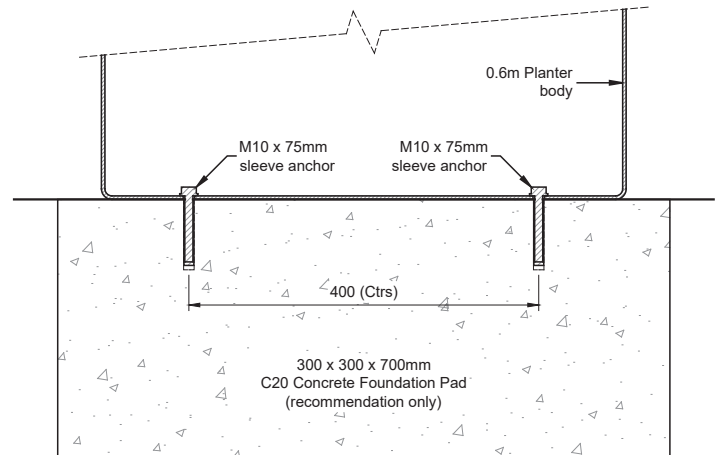
1.2 x 0.6m Planter

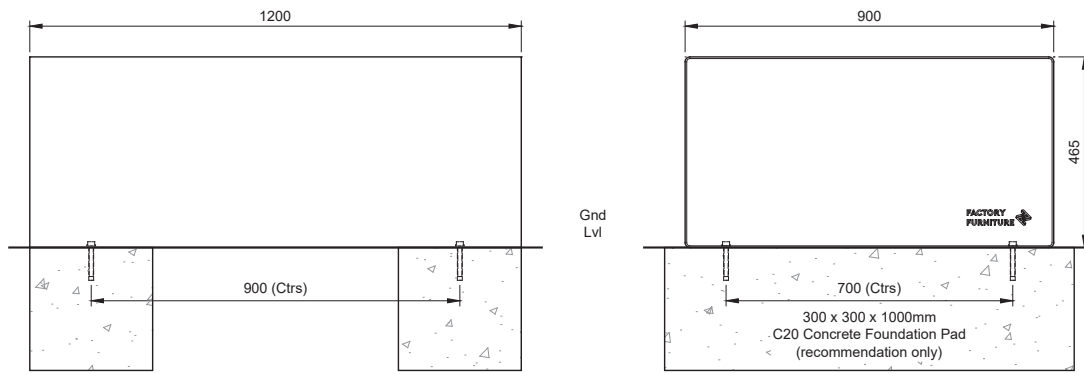
Installation Instructions

All installation works to be carried out by competent personnel - install as complete unit.

Steel Rakt Planter (0.6m)

1. Install suitable foundation pads (see illustration) with top face at ground level.
2. Position planter in correct orientation with planter central on foundation pads.
3. Mark hole positions through base.
4. Remove the planter; drill holes $\text{\O}12\text{mm}$ x 90mm deep (or as bolt manufacturer's recommendations)
5. Clear debris from holes
6. Reposition planter unit and fix to foundation pads using 4 no. zinc-coated M10 x 75mm sleeve anchors per planter tightened to 50Nm (or as per manufacturer's instruction).
7. If a number of planters (or benches etc.) are to be installed in a run then bolt sections together using M8 nuts and bolts provided ensuring that each section is separated from the next with a join spacer (provided).
8. Check level and reinstate ground if necessary





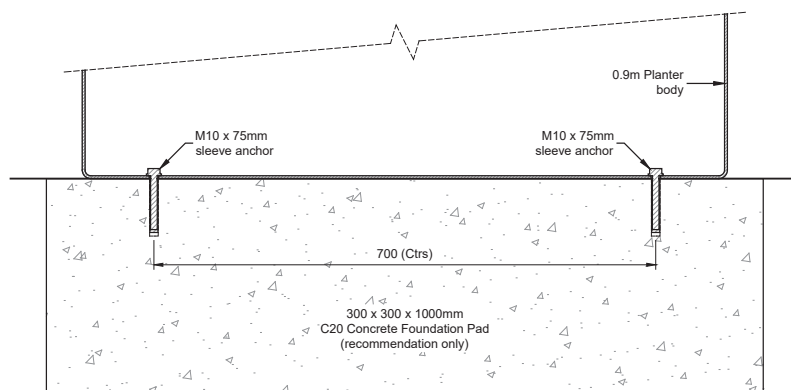
1.2 x 0.9m Planter

Installation Instructions

All installation works to be carried out by competent personnel - install as complete unit.

Steel Rakt Planter (0.9m)

1. Install suitable foundation pads (see illustration) with top face at ground level.
2. Position planter in correct orientation with planter central on foundation pads.
3. Mark hole positions through base.
4. Remove the planter; drill holes $\text{\O}12\text{mm}$ x 90mm deep (or as bolt manufacturer's recommendations)
5. Clear debris from holes
6. Reposition planter unit and fix to foundation pads using 4 no. zinc-coated M10 x 75mm sleeve anchors per planter tightened to 50Nm (or as per manufacturer's instruction).
7. If a number of planters (or benches etc.) are to be installed in a run then bolt sections together using M8 nuts and bolts provided ensuring that each section is separated from the next with a join spacer (provided).
8. Check level and reinstate ground if necessary



5 Pioneer Road, Faringdon,
Oxfordshire SN7 7BU
+44 (0)1367 242731
hello@factoryfurniture.co.uk

