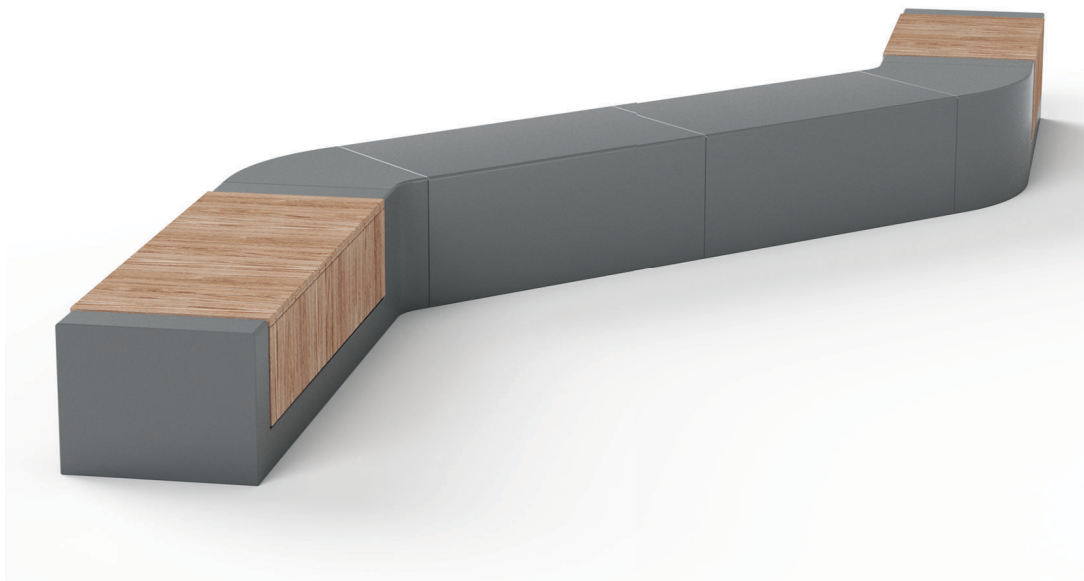
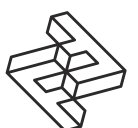


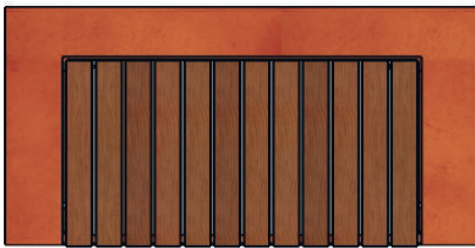
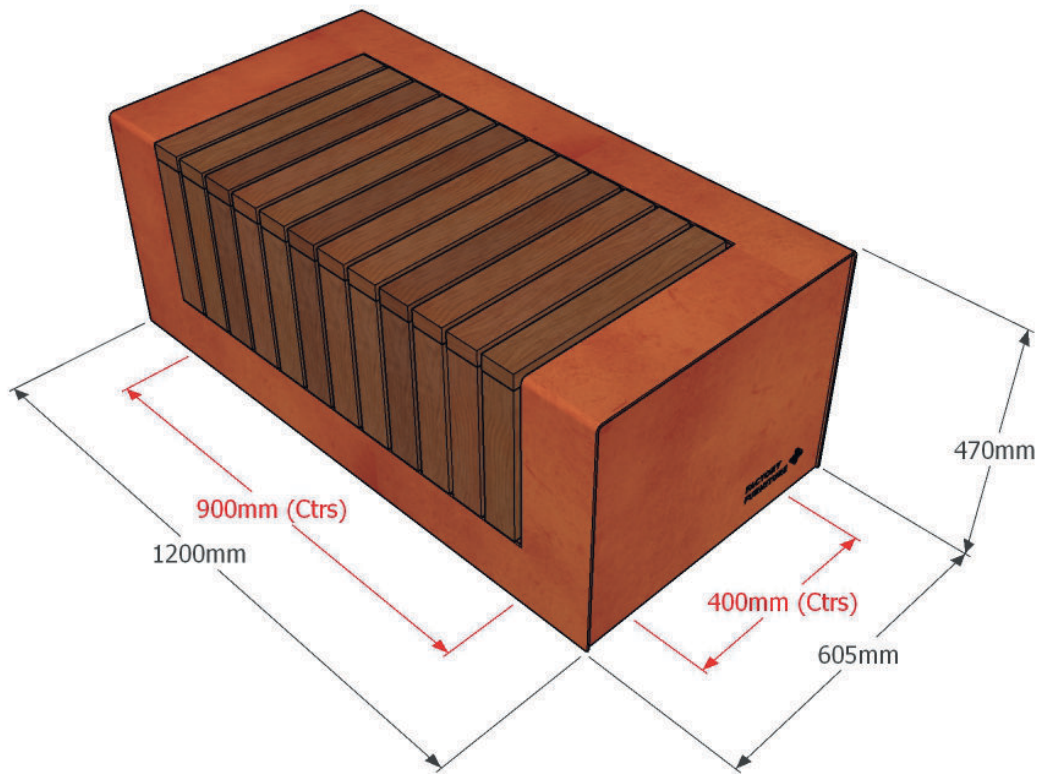
# FACTORY FURNITURE



RAKT Steel Seating (0.6m)

TECHNICAL SHEET





## 1.2 x 0.6m Single Bench

### Composition

*Slats* - FSC® certified hardwood  
*Body* - Corten (option for hot dip galvanised mild steel)



### Finishes

*Timber* - Untreated sanded finish as standard  
*Corten* - Left untreated  
*Mild steel option* - Galvanised and polyester powder-coated (grey as standard or as per client's specification)

### Dimensions

*Metric* L 1200mm | width 605mm | height 470mm  
*Imperial* L 3' 11" | width 2' 0" | height 1' 6½"

### Approx weight

95kg

### Fixing centres & method

900mm (2' 11½") x 400mm (1' 3½") - fixed with 4 no. sleeve anchors per bench

### Foundation

2 no. pads 300 x 300 x 700 mm in C20 concrete (recommendation only)

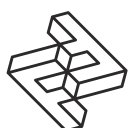
### Handling

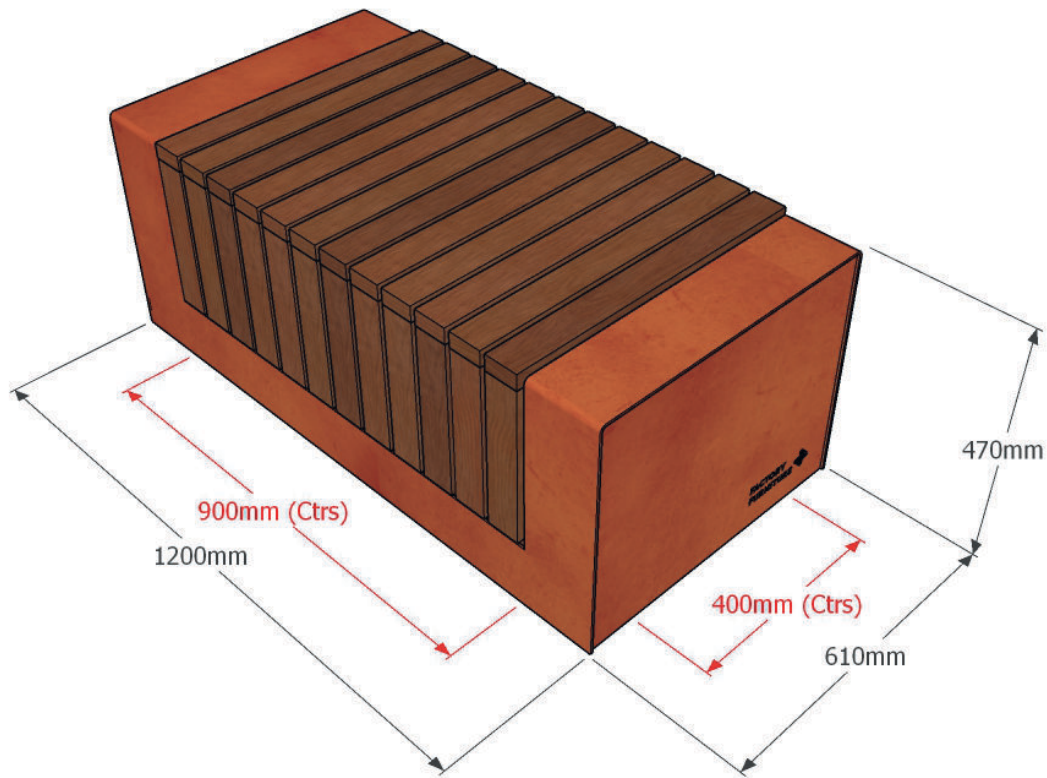
Please observe health & safety lifting guidelines. A fork lift or crane will be required for off loading and positioning of items

### Maintenance

Depends on usage and position. All elements will require annual cleaning. Timber and Corten steel require no maintenance. Galvanised & powder coated mild steel only requires maintenance if damaged.

*Please note: when a powder-coat is applied to a hot dip galvanised surface pinholing can occur in the surface finish.*





## 1.2 x 0.6m Double Bench

### Composition

*Slats* - FSC® certified hardwood  
*Body* - Corten (option for hot dip galvanised mild steel)



### Finishes

*Timber* - Untreated sanded finish as standard  
*Corten* - Left untreated  
*Mild steel option* - Galvanised and polyester powder-coated (grey as standard or as per client's specification)

### Dimensions

*Metric* L 1200mm | width 610mm | height 470mm  
*Imperial* L 3' 11" | width 2' 0" | height 1' 6½"

### Approx weight

104kg

### Fixing centres & method

900mm (2' 11½") x 400mm (1' 3½") - fixed with 4 no. sleeve anchors per bench

### Foundation

2 no. pads 300 x 300 x 700 mm in C20 concrete (recommendation only)

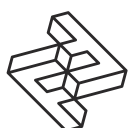
### Handling

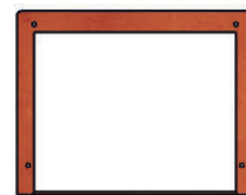
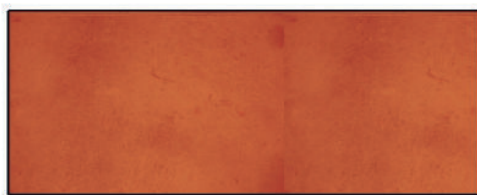
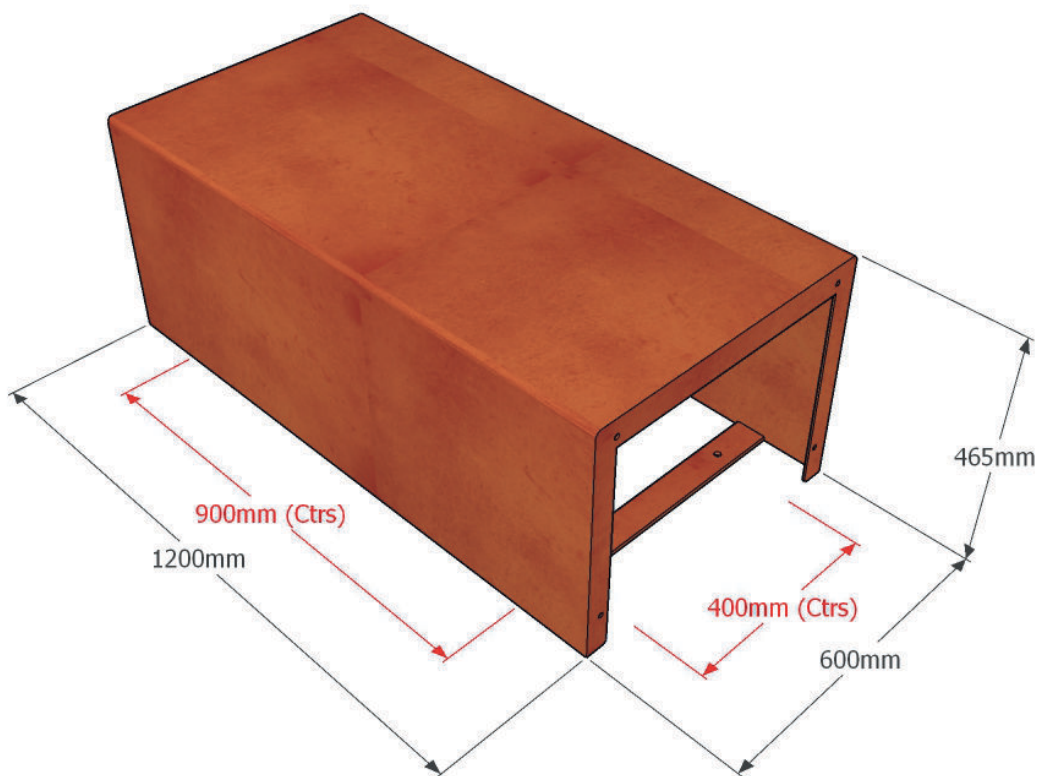
Please observe health & safety lifting guidelines. A fork lift or crane will be required for off loading and positioning of items

### Maintenance

Depends on usage and position. All elements will require annual cleaning. Timber and Corten steel require no maintenance. Galvanised & powder coated mild steel only requires maintenance if damaged.

*Please note: when a powder-coat is applied to a hot dip galvanised surface pinholing can occur in the surface finish.*





## 1.2 x 0.6m Link Bench

### Composition

Body - Corten (option for hot dip galvanised mild steel)

### Finishes

Corten - Left untreated

Mild steel option - Galvanised and polyester powder-coated (grey as standard or as per client's specification)

### Dimensions

Metric L 1200mm | width 600mm | height 465mm  
Imperial L 3' 11" | width 1' 11½" | height 1' 6½"

### Fixing centres & method

900mm (2' 11½") x 400mm (1' 3½") - fixed with 4 no. sleeve anchors per bench

### Approx weight

69kg

### Foundation

2 no. pads 300 x 300 x 700 mm in C20 concrete (recommendation only)

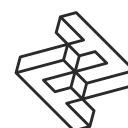
### Handling

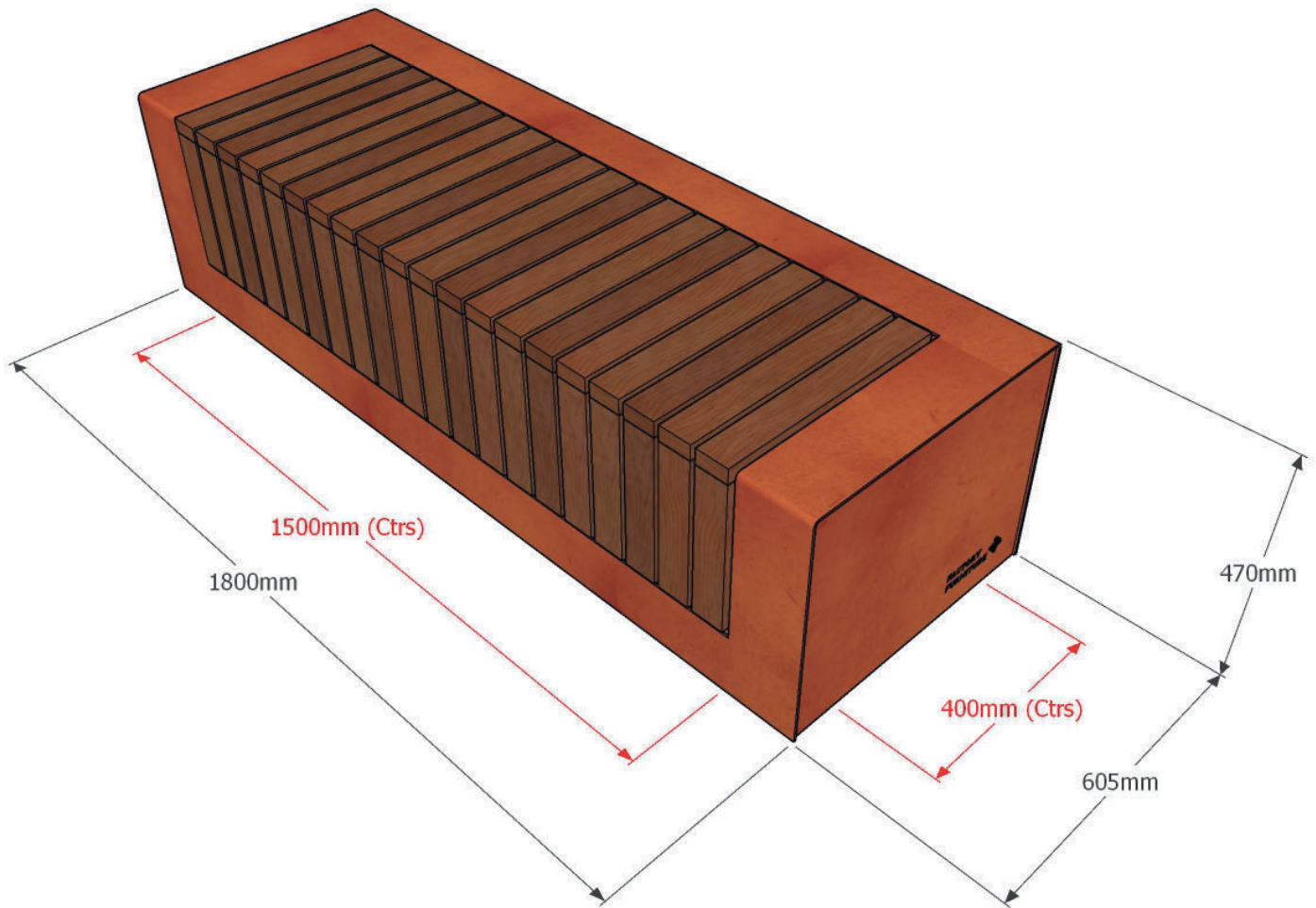
Please observe health & safety lifting guidelines. A fork lift or crane will be required for off loading and positioning of items

### Maintenance

Depends on usage and position. All elements will require annual cleaning. Corten steel requires no maintenance. Galvanised & powder coated mild steel option only requires maintenance if damaged.

Please note: when a powder-coat is applied to a hot dip galvanised surface pinholing can occur in the surface finish.





## 1.8 x 0.6m Single Bench

### Composition

Slats - FSC® certified hardwood

Body - Corten (option for hot dip galvanised mild steel)



### Finishes

Timber - Untreated sanded finish as standard

Corten - Left untreated

Mild steel option - Galvanised and polyester powder-coated (grey as standard or as per client's specification)

### Dimensions

Metric L 1800mm | width 605mm | height 470mm

Imperial L 5' 11" | width 2' 0" | height 1' 6½"

### Approx weight

134kg

### Fixing centres & method

1500mm (4' 11") x 400mm (1' 3½") - fixed with 4 no. sleeve anchors per bench

### Foundation

2 no. pads 300 x 300 x 700 mm in C20 concrete (recommendation only)

### Handling

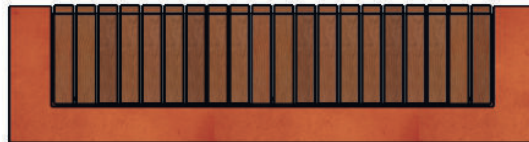
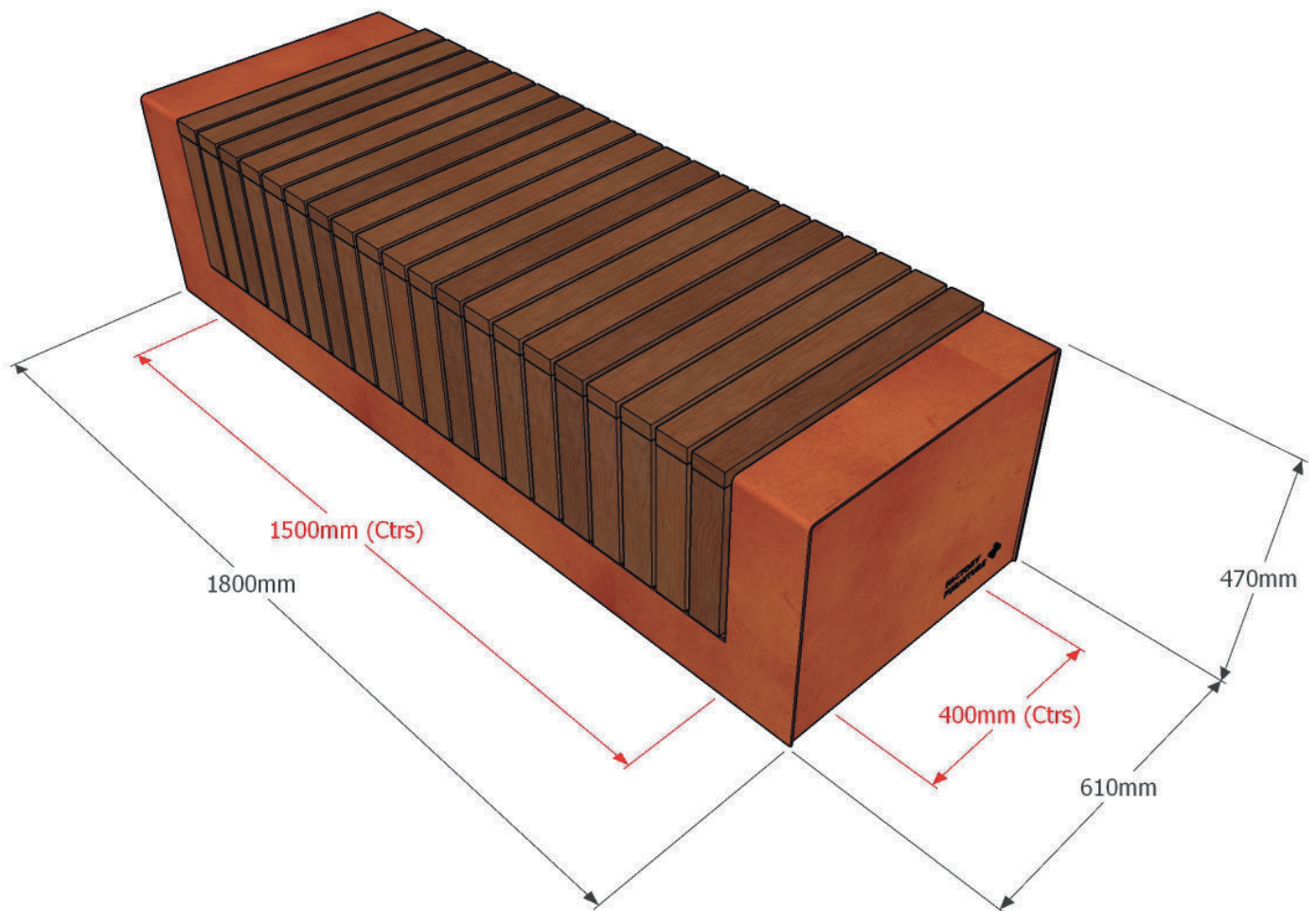
Please observe health & safety lifting guidelines. A fork lift or crane will be required for off loading and positioning of items

### Maintenance

Depends on usage and position. All elements will require annual cleaning. Timber and Corten steel require no maintenance. Galvanised & powder coated mild steel only requires maintenance if damaged.

Please note: when a powder-coat is applied to a hot dip galvanised surface pinholing can occur in the surface finish.





## 1.8 x 0.6m Double Bench

### Composition

*Slats* - FSC® certified hardwood

*Body* - Corten (option for hot dip galvanised mild steel)



### Finishes

*Timber* - Untreated sanded finish as standard

*Corten* - Left untreated

*Mild steel option* - Galvanised and polyester powder-coated (grey as standard or as per client's specification)

### Dimensions

*Metric* L 1800mm | width 610mm | height 470mm

*Imperial* L 5' 11" | width 2' 0" | height 1' 6½"

### Approx weight

149kg

### Fixing centres & method

1500mm (4' 11") x 400mm (1' 3½") - fixed with 4 no. sleeve anchors per bench

### Foundation

2 no. pads 300 x 300 x 700 mm in C20 concrete (recommendation only)

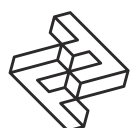
### Handling

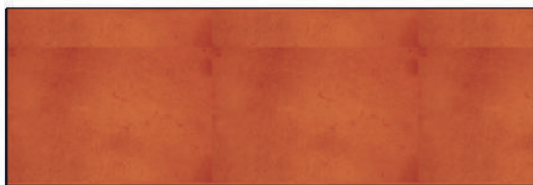
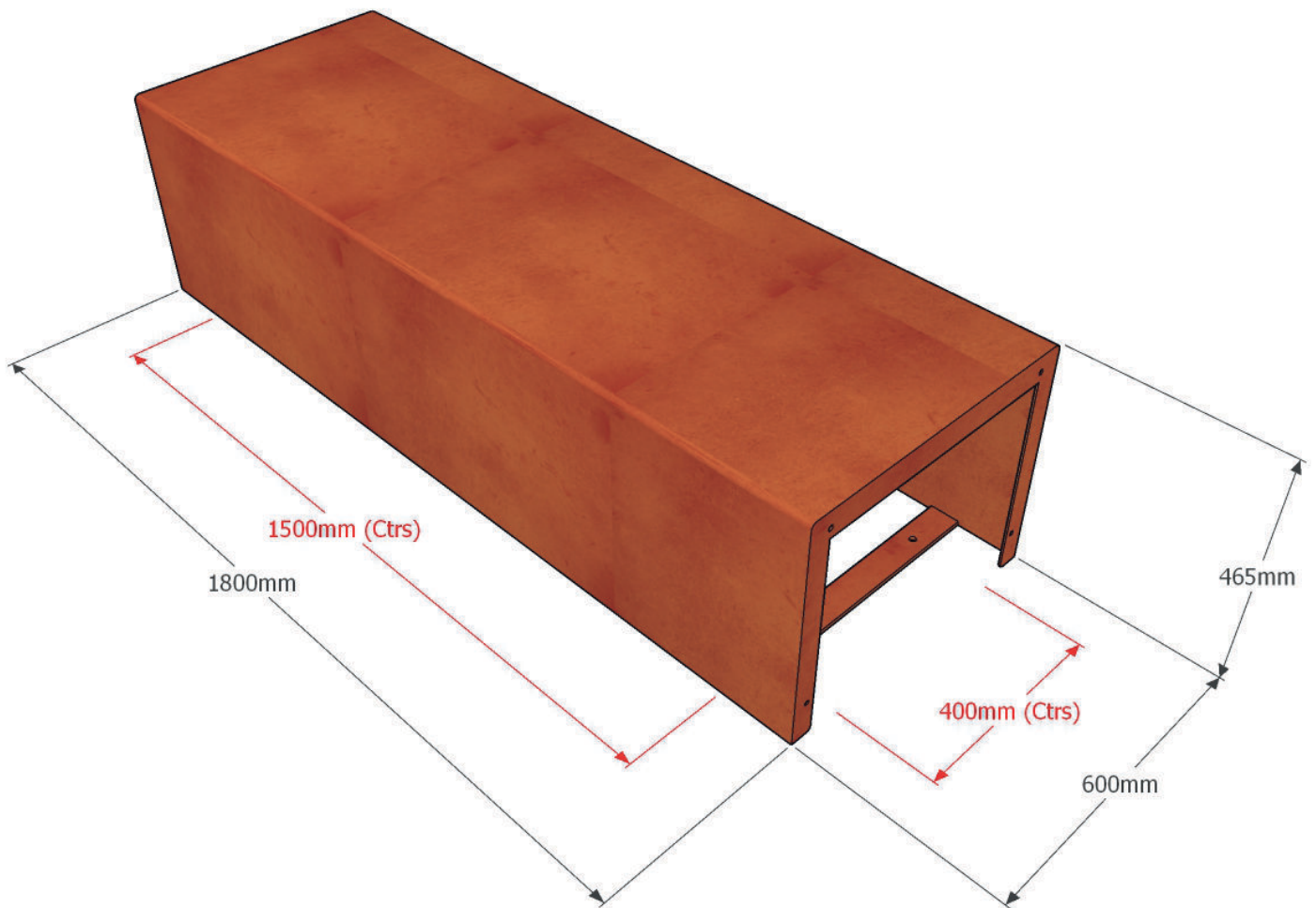
Please observe health & safety lifting guidelines. A fork lift or crane will be required for off loading and positioning of items

### Maintenance

Depends on usage and position. All elements will require annual cleaning. Timber and Corten steel require no maintenance. Galvanised & powder coated mild steel only requires maintenance if damaged.

*Please note: when a powder-coat is applied to a hot dip galvanised surface pinholing can occur in the surface finish.*





## 1.8 x 0.6m Link Bench

### Composition

Body - Corten (option for hot dip galvanised mild steel)

### Finishes

Corten - Left untreated

Mild steel option - Galvanised and polyester powder-coated (grey as standard or as per client's specification)

### Dimensions

Metric L 1800mm | width 600mm | height 465mm  
Imperial L 5' 11" | width 1' 11½" | height 1' 6½"

### Fixing centres & method

1500mm (4' 11") x 400mm (1' 3½") - fixed with 4 no. sleeve anchors per bench

### Approx weight

98kg

### Foundation

2 no. pads 300 x 300 x 700 mm in C20 concrete (recommendation only)

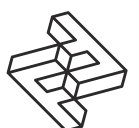
### Handling

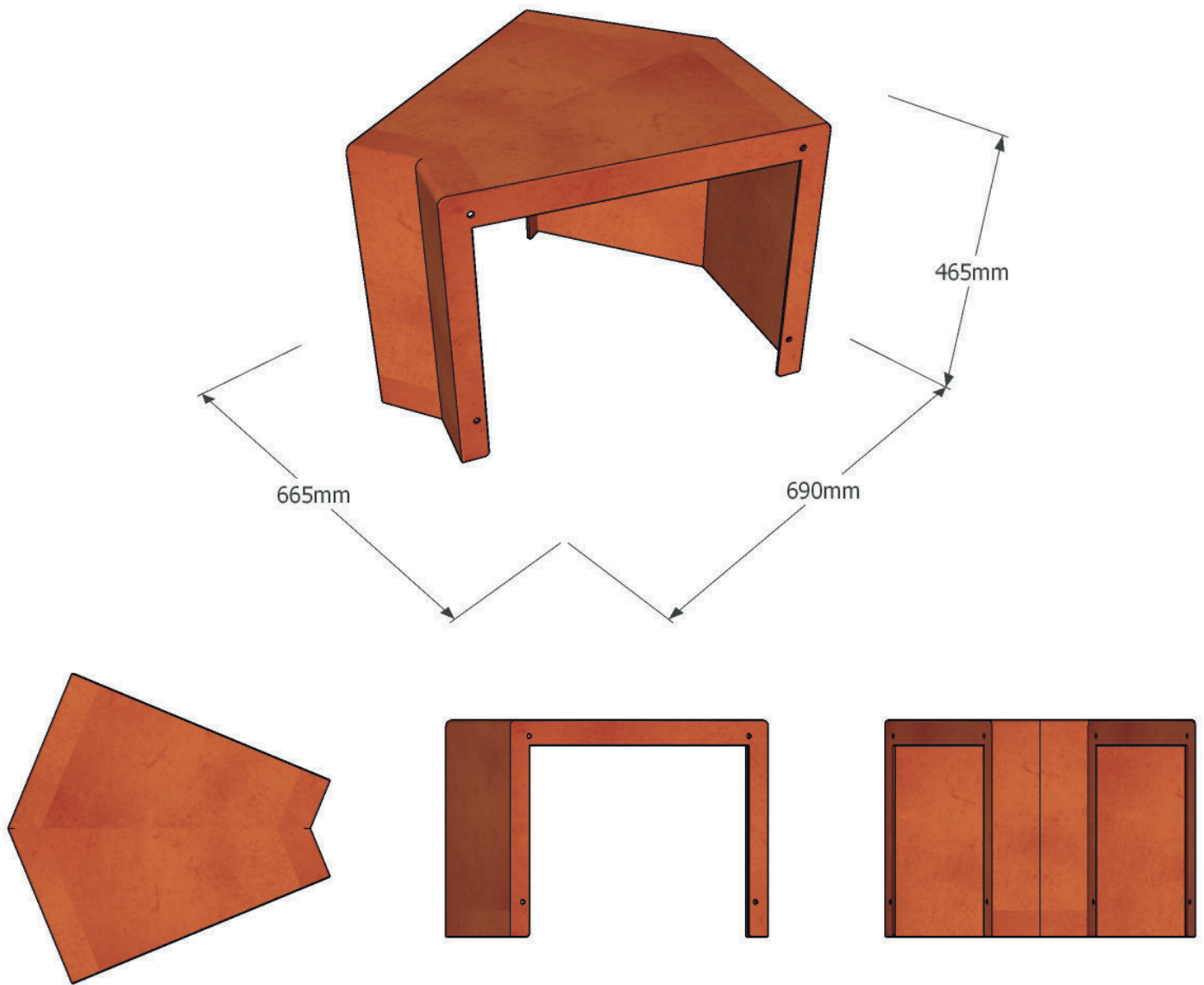
Please observe health & safety lifting guidelines. A fork lift or crane will be required for off loading and positioning of items

### Maintenance

Depends on usage and position. All elements will require annual cleaning. Corten steel requires no maintenance. Galvanised & powder coated mild steel option only requires maintenance if damaged.

*Please note: when a powder-coat is applied to a hot dip galvanised surface pinholing can occur in the surface finish.*





## 0.6m Corner Bench

### Composition

*Body - Corten (option for hot dip galvanised mild steel)*

### Finishes

*Corten - Left untreated*

*Mild steel option - Galvanised and polyester powder-coated (grey as standard or as per client's specification)*

### Dimensions

*Metric L 665mm | width 690mm | height 465mm*

*Imperial L 2' 2" | width 2' 3" | height 1' 6½"*

### Fixing centres & method

900mm (2' 11½") x 700mm (2' 3½") - fixed with 4 no. sleeve anchors per bench

### Approx weight

30kg

### Foundation

2 no. pads 750 x 800 x 300 mm in C20 concrete (recommendation only)

### Handling

Please observe health & safety lifting guidelines. A fork lift or crane will be required for off loading and positioning of items

### Maintenance

Depends on usage and position. All elements will require annual cleaning. Corten steel requires no maintenance. Galvanised & powder coated mild steel option only requires maintenance if damaged.

*Please note: when a powder-coat is applied to a hot dip galvanised surface pinholing can occur in the surface finish.*

