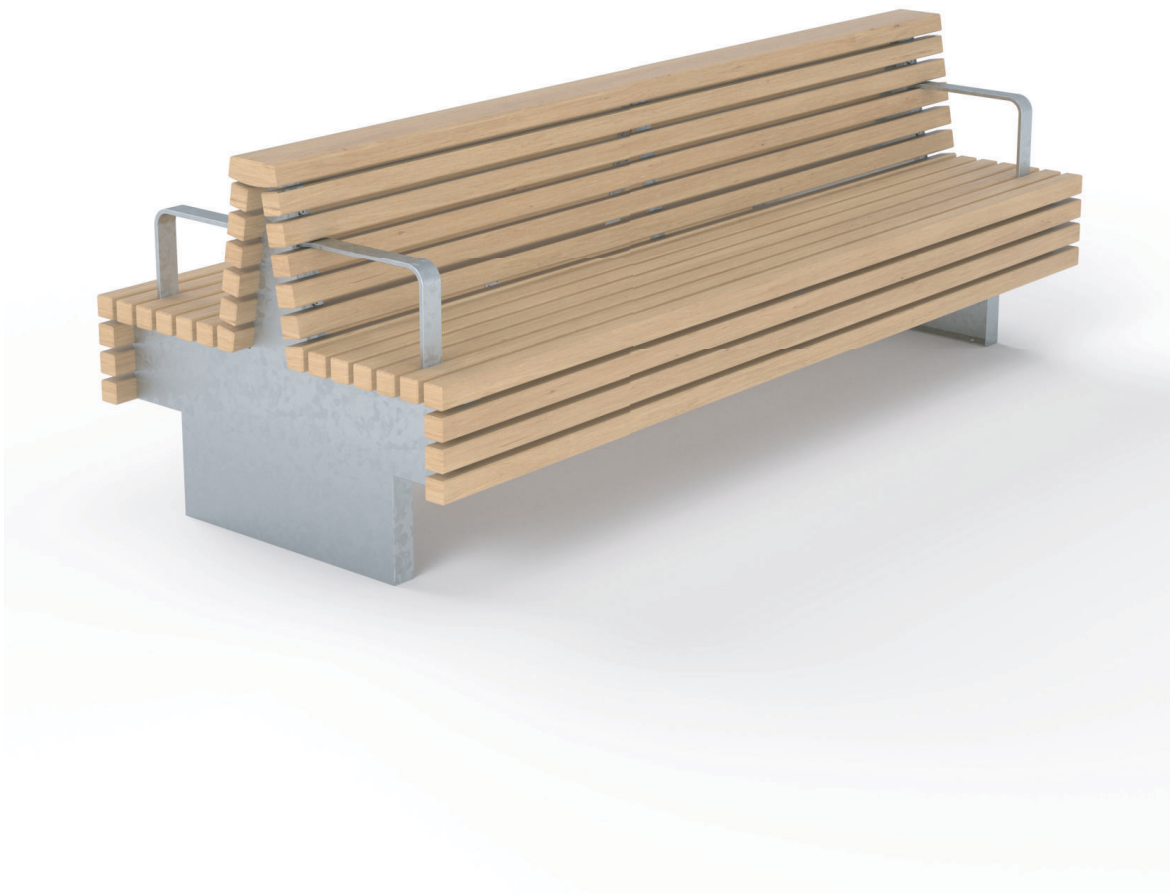
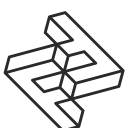


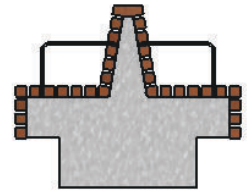
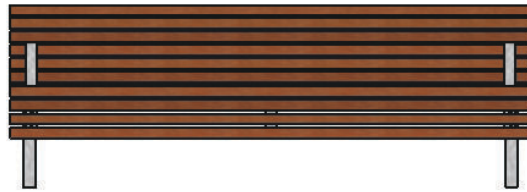
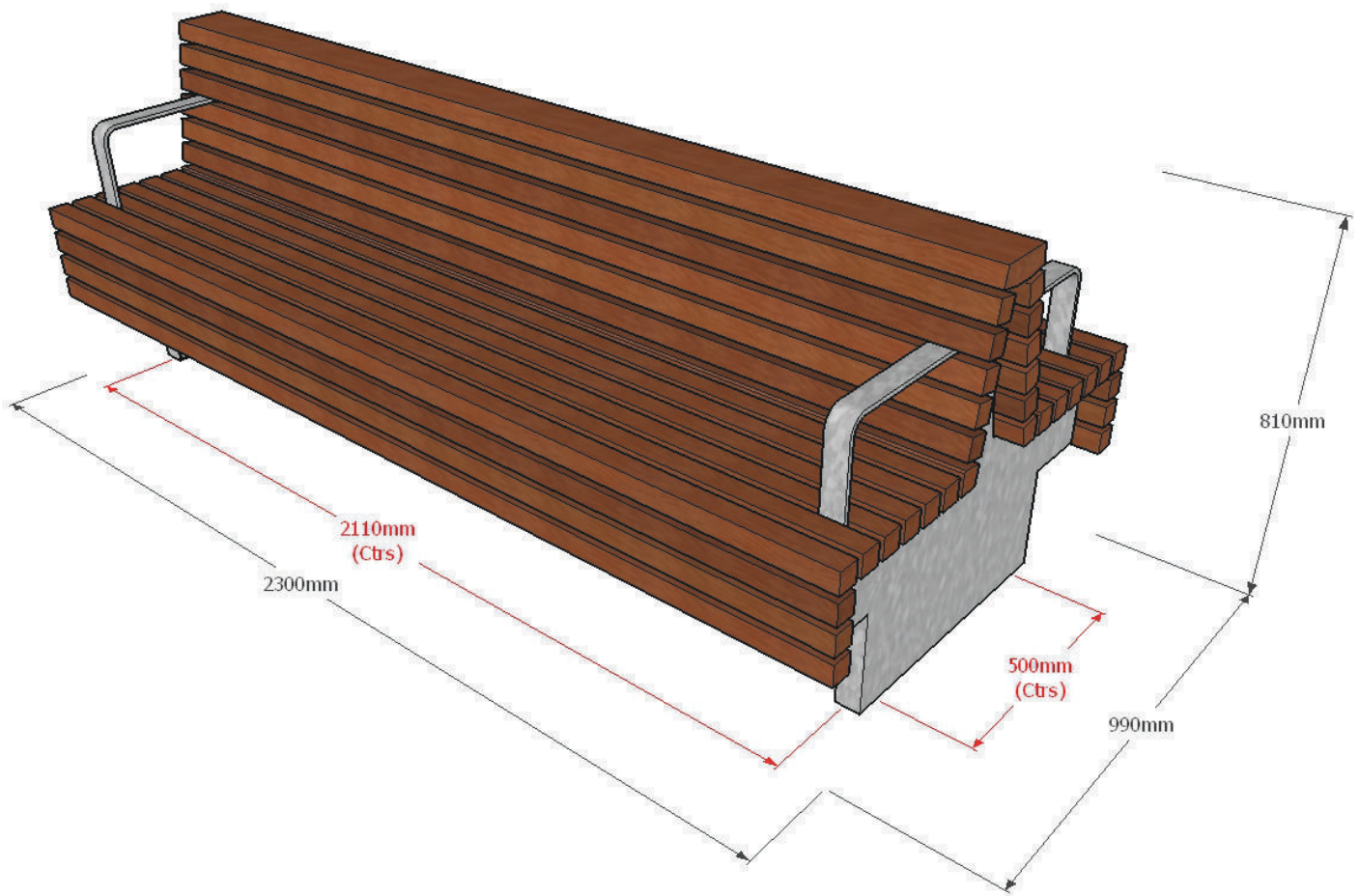
FACTORY FURNITURE



Tord Double Seat

TECHNICAL SHEET





Composition

Slats - FSC® certified hardwood

Frame - Mild steel



Finishes

Timber - Untreated sanded finish as standard

Mild steel - Hot dip galvanised as standard (polyester powder-coated option available*)

Dimensions

Metric L - 2300mm | W - 990mm | H - 810mm

Imperial L - 7' 6½" | W - 3' 3" | H - 2' 8"

Approx weight

235kg

Fixing centres

2110mm (6' 11") x 500mm (1' 7½")

Fixing method

2 off Resin fix anchors per leg (4 off per seat)

Foundation

2 no. pads 400 x 400 x 700 mm in C20 concrete (recommendation only)

Handling

Please observe health & safety lifting guidelines. A forklift or crane will be required for off-loading and positioning of this product

Maintenance

Depends on usage and position. All elements will require annual cleaning. Galvanised and polyester powder-coated mild steel only requires maintenance if damaged.

