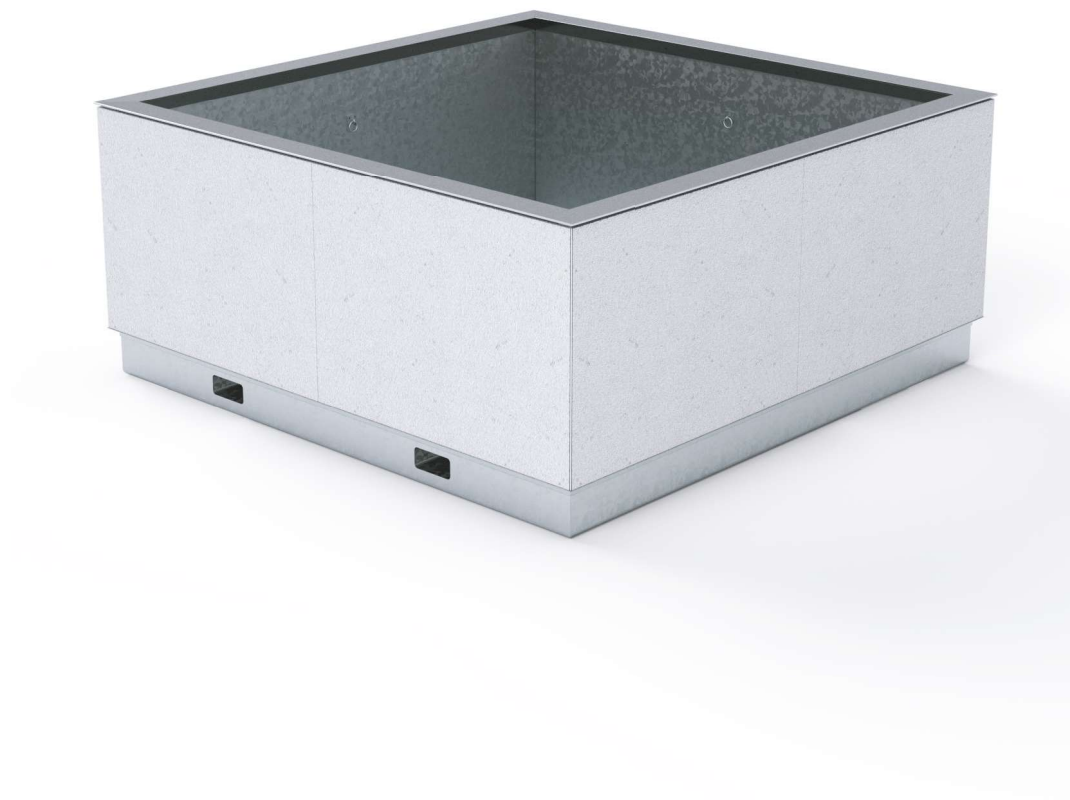
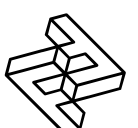


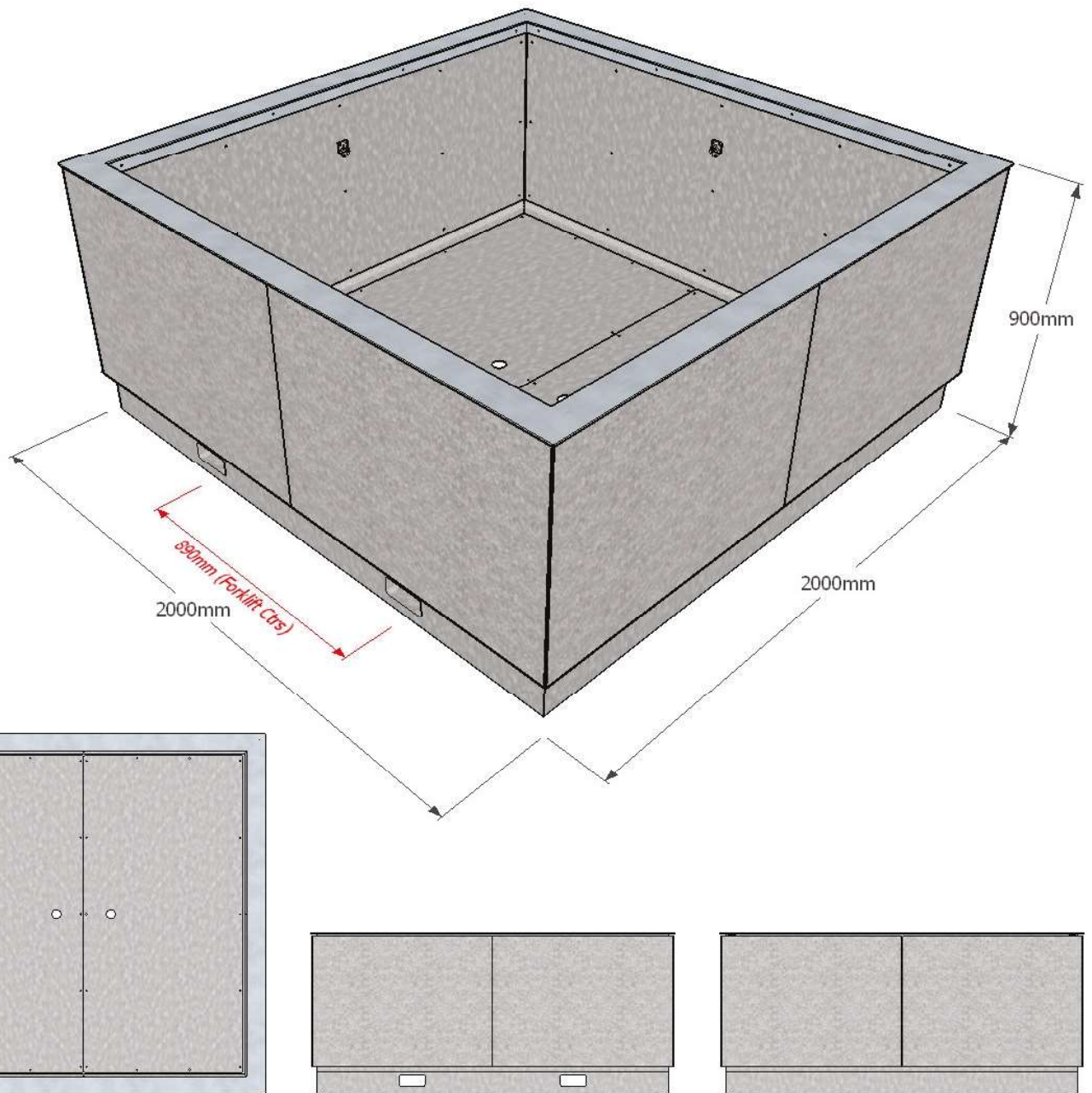
# FACTORY FURNITURE



## Tree Granite Planter

TECHNICAL SHEET





## Composition

*Sides* - Flamed finish granite tile

*Rim* - Satin polished stainless steel

*Frame* - Hot dip galvanised mild steel

*Liner / tile backer panels* - Pre-galv. mild steel sheet

## Dimensions

*Metric* L 2000mm | width 2000mm | height 900mm

*Imperial* L 6' 6½" | width 6' 6½" | height 2' 11½"

## Planter capacity

2300ltrs

## Approx weight

1074kg

## Forklift centres

890mm

## Handling

Please observe health & safety lifting guidelines. A forklift or crane will be required for off-loading and positioning of product.

## Maintenance

Depends on usage and position. All elements will require annual cleaning. Galvanised liner and frame will require maintenance only if damaged. Stainless steel and granite require no further maintenance

