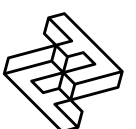


# FACTORY FURNITURE



## Tree Radial Bench & Seat

OPERATION & MAINTENANCE MANUAL



# Introduction

## Design

Design, shop drawings and development by Factory Furniture Ltd.

## Manufacture

Factory Furniture manufactured components. Products are assembled in Factory workshops, checked and dispatched ready for installation. Replacement products or components thereof should be ordered direct from Factory Furniture Ltd.

## Copyright

The design copyright for the product and drawing copyright remains the sole property of Factory Furniture Ltd.

# General Specifications

## Radial Bench

*Metric* L 2800mm | width 2800mm | height 450mm\*  
*Imperial* length 9' 2" | width 9' 2" | height 1' 5½"

\*Not including +100mm below ground level for sub-surface fix option

**Approx Weight** 242kg

**Fixing Centres** See installation dwgs at end of manual

## Radial Seat (with back)

*Metric* L 2800mm | width 2800mm | height 785mm\*  
*Imperial* length 9' 2" | width 9' 2" | height 2' 7"

\*Not including +100mm below ground level for sub-surface fix option

**Approx Weight** 365kg (+8kg for armrest option)

**Fixing Centres** See installation dwgs at end of manual

# Materials & Finishes

## Bench Slats

- Manufactured from FSC® certified tropical hardwood (other FSC timber options available upon request)
- Profiled and left untreated as standard (oil or microporous woodstain treatment available on request)
- Bench slats supported by and fixed to frame with minimum 4 no. fixing points per slat



## Backrest Slats (Seat only)

- Manufactured from FSC® certified tropical hardwood (other FSC timber options available upon request)
- Profiled and left untreated as standard (oil or microporous woodstain treatment available on request)
- Backrest slats held together and fixed to seat with 3 no. concealed zinc-coated mild steel threaded tie rods. Slats separated on tie rods by aluminium spacers and fastened on top by aluminium end caps and underneath by M12 locknuts

## Bases / Frame / Armrests (Armrest optional - seat only)

- Frame, bases and armrests manufactured from stainless steel with satin polished finish
- Bases fixed to frame with 2 no. M10 x 25mm button head bolts and locknuts per base (8 bases / complete bench/seat)
- Anchored using 2 no. resin fixed M10 x 200mm threaded rods and cap nuts per base (surface fix) or 2 no. zinc-coated steel M10 x 75mm sleeve anchors per base (sub-surface fix)
- Where armrests are included they are threaded onto the tie rods at one end and fixed at the other end to the outer seat slat with 2 no. fixing points. There are 4 no. armrest on the complete full tree seat
- Both Radial tree bench / seat come in 4 no. sections that are each joined together using 2 no. M10 x 25mm button head bolts and locknuts through holes in the frame wall

# General Maintenance

(Recommended Schedule & Guidelines)

## Daily/Weekly/Monthly (or as adopted)

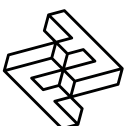
Visual checks of bench / seat top, back and bases - check all items for superficial or physical damage

## Three Monthly

Clean all items as detailed below check all fixings are seated correctly; inspect timber for serious damage and splinters.

## Six Monthly

Secure all fixings; full clean as detailed below; check that bench / seat is firmly secured to the ground



# Specific Maintenance Details

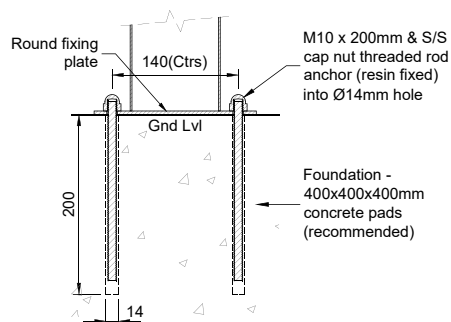
## FSC Timber

Clean with a stiff brush once per year, especially in more exposed locations, in order to prevent a verdigris type build up on the timber surface. Ideally this should be completed in early spring. During the cleaning stage, all exposed timber surfaces should be inspected for splits and splinters. Any splinters and graffiti should be removed and the surface sanded with 100 grit sandpaper in order to remove any uneven / sharp edges or surfaces.

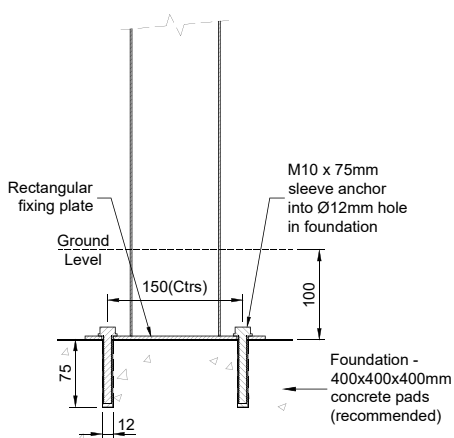
*During the first few months after installation the tannin naturally occurring in the timber may leach out and cause a brown staining on the bases. This may be removed with a light solution of household bleach and water.*

## Stainless Steel (polished stainless steel only)

Clean as required, but at least every three months, using a stainless steel polish and a lint free cloth. To remove ground in dirt, a stainless steel finishing pad may be required



Surface Fix Detail



Sub-surface Fix Detail

# Installation Instructions

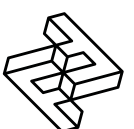
**All installation works to be carried out by competent personnel - install as complete unit.**

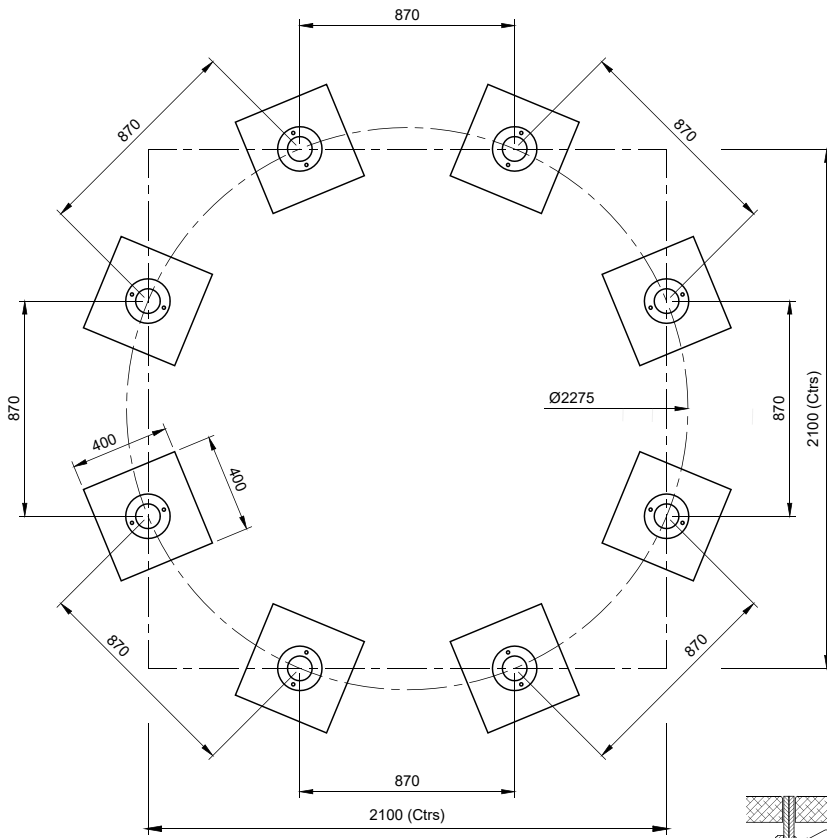
## Radial Tree Bench / Seat (Surface and sub-surface fix)

1. Install suitable foundation pads (see illustration) each with top face at ground level or 100mm below finished ground level for sub-surface fix.
2. Unpack bases and attach to the bench/seat using 2 no. M10 x 25mm button head bolts per base and tighten to 14Nm
3. Assemble 4 no. quarter modules and fix together using 2 no. M10 x 25mm button head bolts per join and tighten to 14Nm (see illustration). For fixing around a tree the seat can be assembled in two halves with final assembly once it's in position
4. Position assembled bench/seat (a crane or forklift will be required at this stage) in correct orientation with bases centrally on foundation pads; mark hole positions through base plates
5. Remove the bench/seat; drill holes  $\varnothing 14\text{mm}$  x 200mm deep (surface fix) or  $\varnothing 12\text{mm}$  x 75mm deep or as manufacturer's recommendations (sub-surface fix).
6. Clear debris from holes.
- 7.a (Surface fix) Fill the holes to within approximately 35mm from the top with Hilti HY150 resin (or similar). Lift the bench/seat (with threaded anchor rods/capnuts in place) and carefully lower the anchors into the holes, leave for two hours to set.
- 7.b Using a torque wrench, tighten nuts and washers over flange plates to 20Nm to fasten down the bench/seat.
8. (Sub-surface fix) Reposition bench/seat unit and fix each base to foundation pads using 2 no. zinc-coated M10 x 75mm sleeve anchors tightened to 50Nm (or as per manufacturer's instruction). Ensure bench/seat remains level during fixing process.
9. Check level & re-instate ground level if necessary

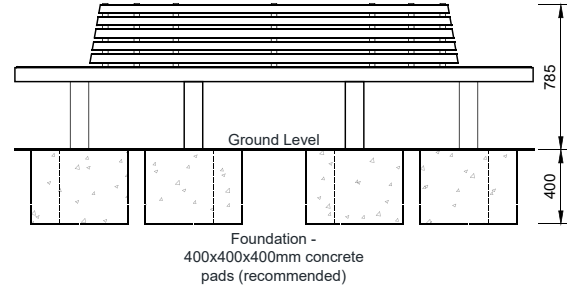
## IMPORTANT NOTE

Ensure that stainless steel is protected during site cutting of stone – contamination from disc cutters will produce corrosion on stainless steel components.

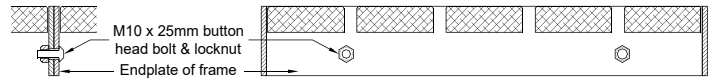
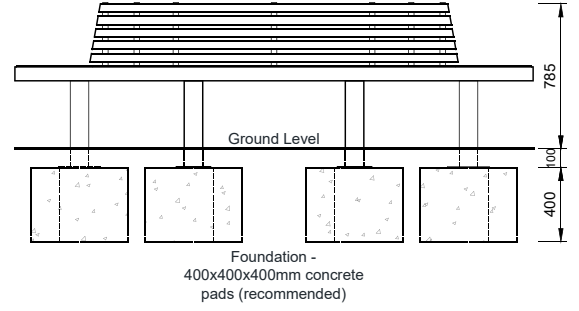




*Bench (Front View)*



*Seat (Front View)*



*Module Joining Detail*

5 Pioneer Road, Faringdon,  
Oxfordshire SN7 7BU  
+44 (0)1367 242731  
hello@factoryfurniture.co.uk

**factoryfurniture.co.uk**

