

FACTORY FURNITURE



NEX Planter
(Various heights)

Introduction

Design

Design, shop drawings and development by Factory Furniture Ltd

Manufacture

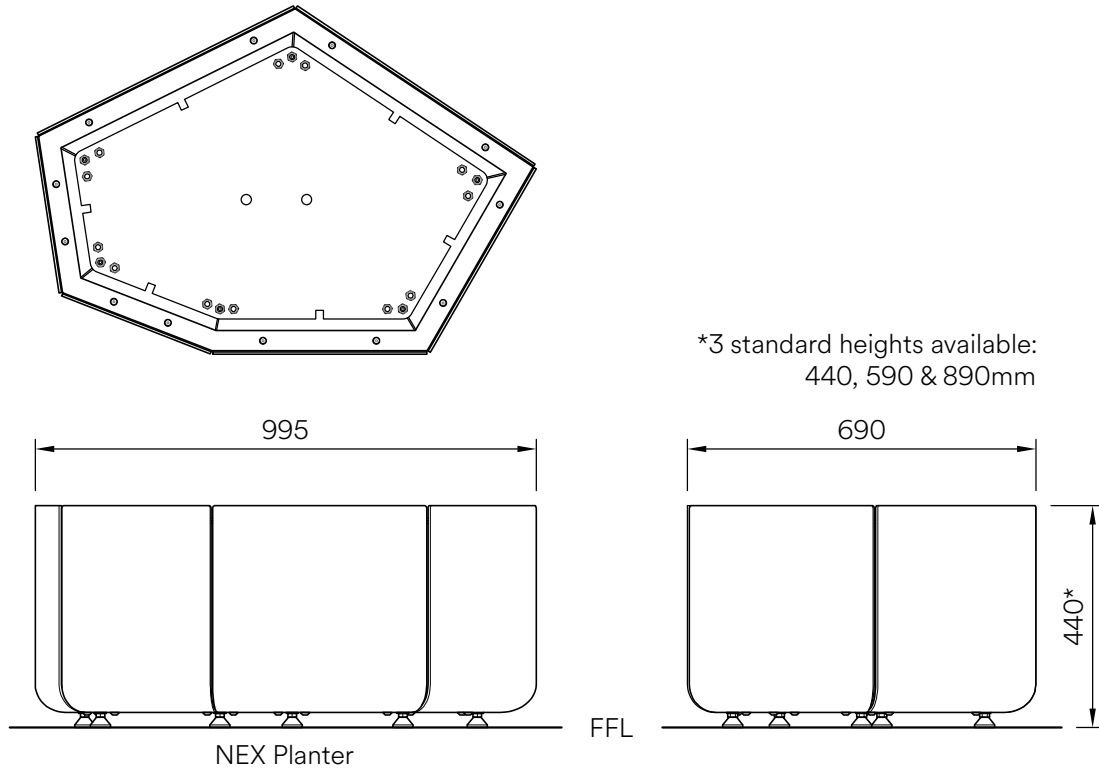
Factory Furniture manufactured components. Products are assembled in Factory workshops, checked and dispatched ready for installation. Replacement products or components should be ordered direct from Factory Furniture Ltd.

Copyright

The design copyright for the product and drawing copyright remains the sole property of Factory Furniture Ltd.

Contents

Spec Sheet	... 3
Detailed Materials & Maintenance	... 4
Installation Instructions	... 5
NBS Specifications	... 6



Composition

Frame - Mild steel

Finish

Mild steel - Hot-dip galvanised (polyester powder-coat available (colour as per client's specification))

Dimensions

Metric L 995mm | width 690mm | height 440mm (also 590 & 890mm)

Imperial L 3' 3" | width 2' 3" | height 1' 5½" (also 1' 11" & 2' 11")

Approx tare weight

69kg (Also 89 & 122kg)

Planter capacity

160ltrs (Also 230 & 370ltrs)

Handling

Please observe health & safety lifting guidelines. A forklift or crane will be required for off-loading and positioning of this product.

Maintenance

Depends on usage and position. All elements will require cleaning annually. Galvanised and powder coated mild steel only require maintenance if damaged.

*Please note that when a powdercoat is applied over a hot dip galvanised surface pinholing can occur in the surface finish this is not considered a defect.

Detailed Material & Finish Specifications

Planter Body

- Base assembly comprising of 6 off all welded wall panels, a base panel and an upper frame ring that are all bolted together using 12 off M10 x 20mm button head bolts & lock nuts (base) and 12 off M6 x 20mm csk bolts (upper).
- Base sections are manufactured from hot-dip galvanised mild steel (polyester powder coat available (colour as per customer specification))
- 6 off M10 adjustable feet around perimeter of base for maximum stability

General Maintenance (Recommended Schedule & Guidelines)

Daily/Weekly/Monthly (or as adopted)

Visual checks of planter - check all items for superficial or physical damage.

Three Monthly

Clean all items as detailed below check all fixings are seated correctly.

Six Monthly

Secure all fixings; full clean as detailed below; check that planter is stable and levelled correctly

Specific Maintenance Details

Galvanised & Polyester Powder Coated

For general cleaning using a damp cloth and warm soapy water only. Scourers and abrasive cleaners are NOT suitable for this type of finish and may damage it. Before using any cleaning agents to remove graffiti etc. try on a small, inconspicuous area first to avoid causing more unsightly damage.

Repairs

Galvanised & Polyester Powder Coated Surfaces

For light damage (scratches, chips etc.) repair using touch-up paint to match original colour (available from Factory Furniture Ltd). Paint application should be carried out in accordance with approved methods detailed by the paint manufacturer. Please note that it is advisable to use professional painters to achieve best results when touching up larger areas. Products for respraying larger areas are available from Factory Furniture Ltd.

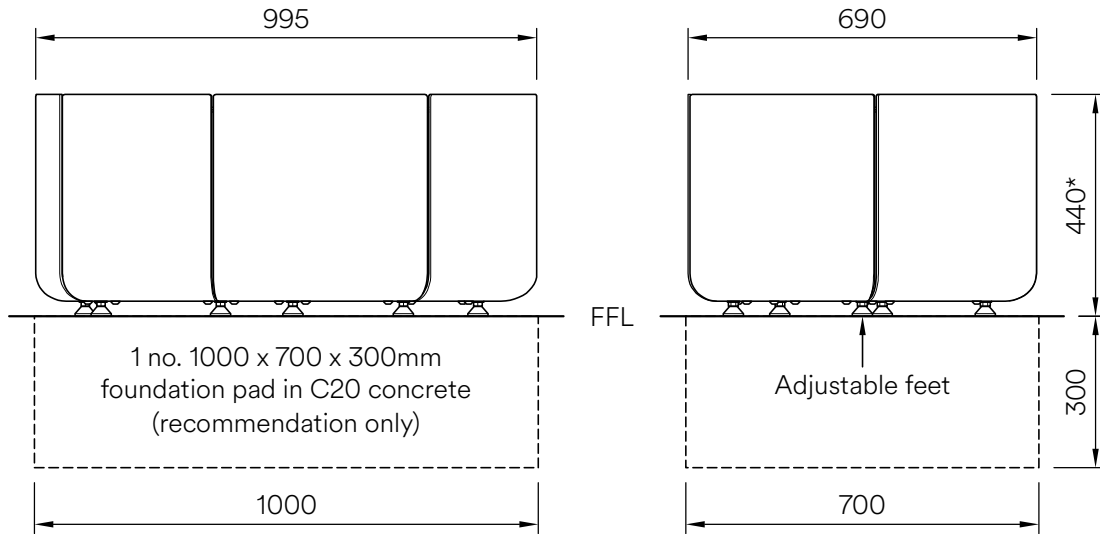
Heavy Damage

In the event of serious damage to any component, replacements should be ordered from Factory Furniture Ltd. Should further assistance be required (or if the product needs to be disassembled for any reason), please contact Factory Furniture for detailed technical advice.

Installation Instructions

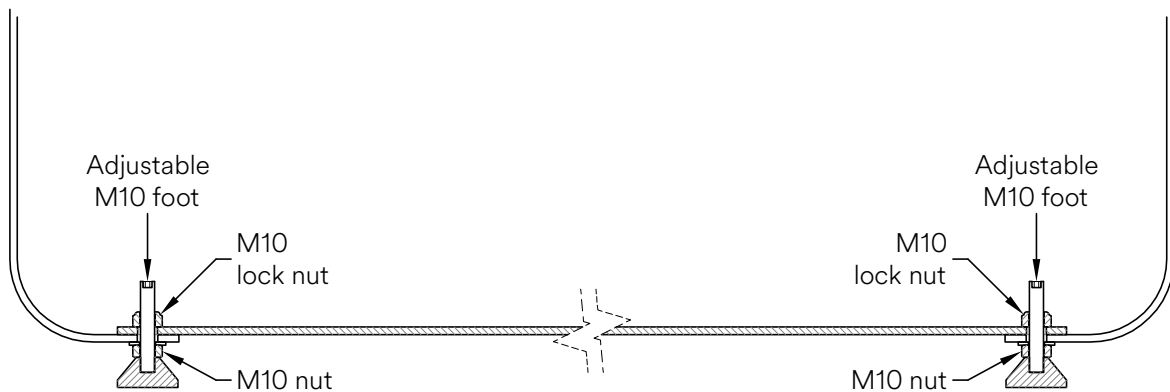
ALL INSTALLATION WORKS TO BE CARRIED OUT BY COMPETENT PERSONNEL - INSTALL AS COMPLETE UNIT

*3 standard heights available:
440, 590, 890mm



Nex Planter

1. Place planter in desired location and level using adjustable feet (please note this is easiest when planter is empty)



NBS Specification Data

PRODUCT REFERENCE – FF4011 – NEX PLANTER

Description Planter with mild steel body
Uniclass 2015 Category Pr_45_63_63_84 Steel plant containers
Design as per drawing: FF4011

MANUFACTURER

Name Factory Furniture Ltd
Address Unit 5 Pioneer Road, Faringdon, Oxfordshire, SN7 7BU
Website www.factoryfurniture.co.uk
Telephone +44 (0)1367 242731

MATERIAL

Planter Mild steel

FINISH

Mild steel Hot-dip galvanised (option for polyester powder coat)

SIZE

995mm x 690mm x 440mm (LxWxH)

995mm x 690mm x 590mm (LxWxH)

995mm x 690mm x 890mm (LxWxH)

FIXING

Free standing