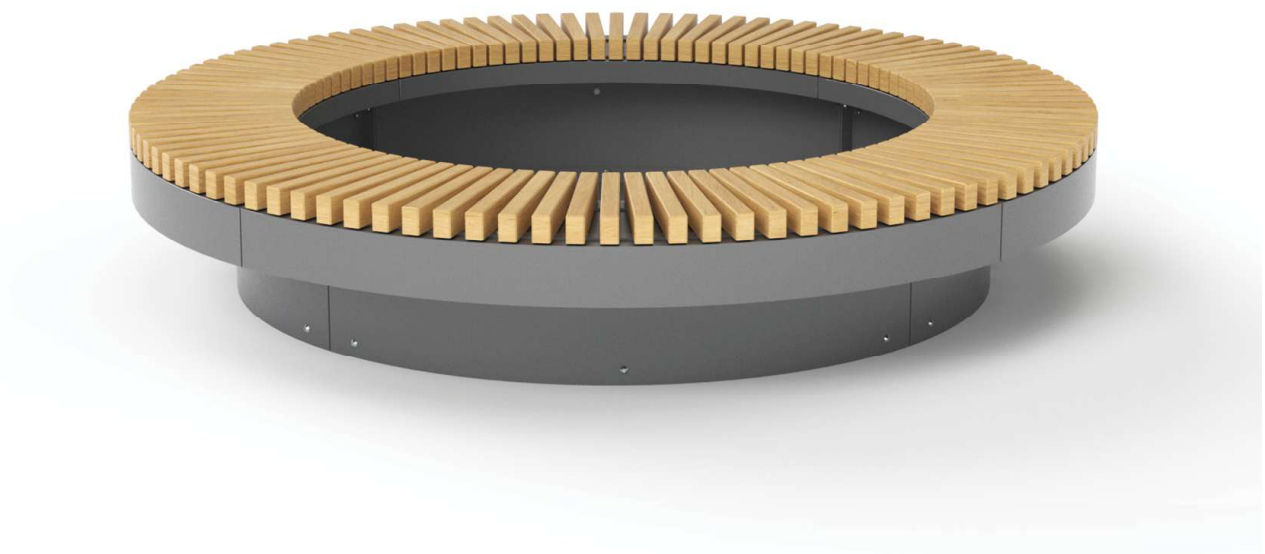


# FACTORY FURNITURE



TOPHAT Planter Bench

# Introduction

## Design

Design, shop drawings and development by Factory Furniture Ltd

## Manufacture

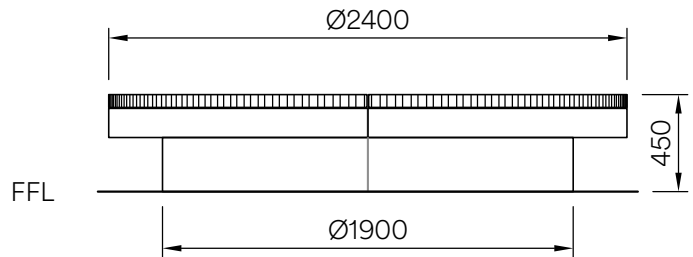
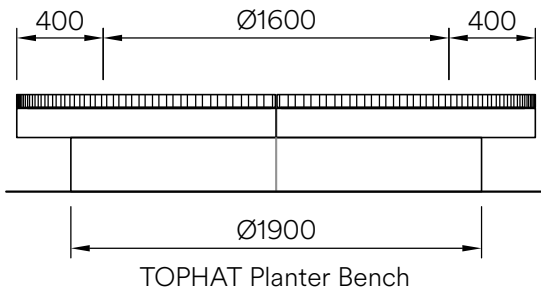
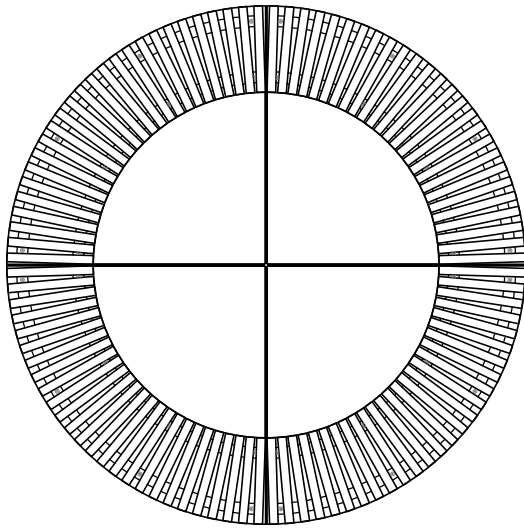
Factory Furniture manufactured components. Products are assembled in Factory workshops, checked and dispatched ready for installation. Replacement products or components should be ordered direct from Factory Furniture Ltd.

## Copyright

The design copyright for the product and drawing copyright remains the sole property of Factory Furniture Ltd.

# Contents

Spec Sheet	... 3
Detailed Materials & Maintenance	... 4
Installation Instructions	... 5
NBS Specifications	... 6



## Composition

Slats - FSC® certified hardwood.

Frame - Mild steel (option for corten steel)

## Finish

Timber - Untreated sanded finish as standard

Mild steel - Hot-dip galvanised (polyester powder-coat available (colour as per client's specification))

## Dimensions

Metric L 2400mm | width 2400mm | height 450mm

Imperial 7' 10½" | width 7' 10½" | height 1' 5½"

## Approx tare weight

458kg

## Planter capacity

985ltrs

## Handling

Please observe health & safety lifting guidelines. A forklift or crane will be required for off-loading and positioning of this product (integrated lifting eyes within planter base are available for this purpose).

## Maintenance

Depends on usage and position. All elements will require cleaning annually. Galvanised and powder coated mild steel only require maintenance if damaged. Corten steel requires no additional maintenance.

\*Please note that when a powdercoat is applied over a hot dip galvanised surface pinholing can occur in the surface finish this is not considered a defect.

# Detailed Material & Finish Specifications

## Planter Slat Assembly

- Bench slats are manufactured from FSC® certified hardwood and are profiled with a sanded finish and left untreated (natural) as standard.
- Slat sub-frame is manufactured from hot-dip galvanised mild steel (polyester powder coat available (colour as per customer specification)).
- Each planter has 4 off bench slat assembly sections which are bolted to the planter body using M10 button head bolts & locknuts.

## Planter Body

- Planter body assembly comprises of 16 off all welded sections including base trays, walls, spacers and upper assemblies.
- Planter body sections are manufactured from hot-dip galvanised mild steel (polyester powder coat available (colour as per customer specification))
- Sections are bolted together using M10 button head bolts & locknuts.

## General Maintenance (Recommended Schedule & Guidelines)

### Daily/Weekly/Monthly (or as adopted)

Visual checks of slat assembly sections and planter body - check all items for superficial or physical damage.

### Three Monthly

Clean all items as detailed below check all fixings are seated correctly; inspect timber for serious damage and splinters.

### Six Monthly

Secure all fixings; full clean as detailed below.

## Specific Maintenance Details

### FSC Timber

Clean with a stiff brush once per year, especially in more exposed locations, in order to prevent a verdigris type build up on the timber surface. Ideally this should be completed in early spring. During the cleaning stage, all exposed timber surfaces should be inspected for splits and splinters. Any splinters and graffiti should be removed and the surface sanded with 100 grit sandpaper in order to remove any uneven / sharp edges or surfaces.

During the first few months after installation the tannin naturally occurring in the timber may leach out and cause a brown staining on the bases. This may be removed with a light solution of household bleach and water.

### Galvanised & Polyester Powder Coated

For general cleaning using a damp cloth and warm soapy water only. Scourers and abrasive cleaners are NOT suitable for this type of finish and may damage it. Before using any cleaning agents to remove graffiti etc. try on a small, inconspicuous area first to avoid causing more unsightly damage.

### Corten Steel

Clean as required, but at least every three months.

## Repairs

### FSC Timber

For light damage, please see section on specific maintenance details above. For instances of heavy damage, the timber item should be replaced. Please reference order number when reordering parts to ensure correct parts are provided.

### Galvanised & Polyester Powder Coated Surfaces

For light damage (scratches, chips etc.) repair using touch-up paint to match original colour (available from Factory Furniture Ltd). Paint application should be carried out in accordance with approved methods detailed by the paint manufacturer. Please note that it is advisable to use professional painters to achieve best results when touching up larger areas. Products for respraying larger areas are available from Factory Furniture Ltd.

### Corten Steel

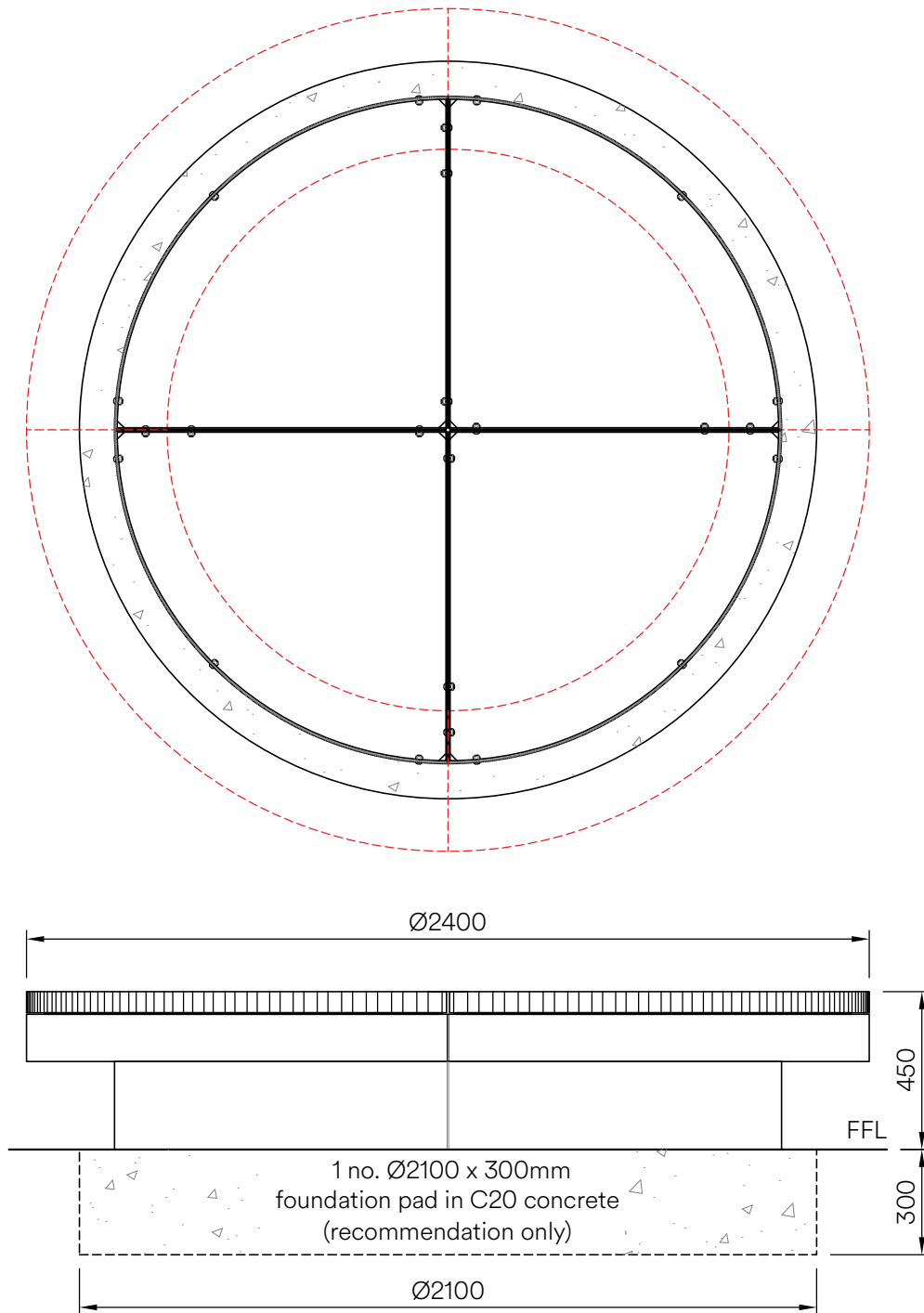
There is no need to repair light damage (scratches, chips etc.) to the rust coloured layer on the surface of the Corten steel. This layer will naturally reform within a short period of time in an external environment.

### Heavy Damage

In the event of serious damage to any component, replacements should be ordered from Factory Furniture Ltd. Should further assistance be required (or if the product needs to be disassembled for any reason), please contact Factory Furniture for detailed technical advice.

# Installation Instructions

ALL INSTALLATION WORKS TO BE CARRIED OUT BY COMPETENT PERSONNEL - INSTALL AS COMPLETE UNIT



## Tophat Planter Bench

1. Install suitable foundation pad (see illustration). Set top face at ground level.
2. Position planter centrally onto foundation pad.

# NBS Specification Data

## PRODUCT REFERENCE – FF4009 – TOPHAT PLANTER BENCH

Description Planter bench with timber slats and mild steel body  
Uniclass 2015 Category Pr\_45\_63\_63\_84 Steel plant containers  
Design as per drawing: FF4009

### MANUFACTURER

Name Factory Furniture Ltd  
Address Unit 5 Pioneer Road, Faringdon, Oxfordshire, SN7 7BU  
Website [www.factoryfurniture.co.uk](http://www.factoryfurniture.co.uk)  
Telephone +44 (0)1367 242731

### MATERIAL

Slats FSC® certified hardwood  
Planter body Mild steel (option for corten steel)

### FINISH

Timber Untreated sanded finish as standard  
Mild steel Hot-dip galvanised (option for polyester powder coat)

### SIZE

Ø2400mm x 450mm (ØxH)

### FIXING

Free standing